



Selec Web Application for
Energy Management

[EnWeb Installation Guide](#)

Selec Controls Pvt. Ltd.
EL-27/1, Electronic Zone,
TTC Industrial Area,
MIDC, Mahape,
Navi Mumbai-400710, India
www.selec.com

Index

- Installation Contents
- Installing JDK
- Configuring JDK
- Installing MySQL Database Server
- Configuring MySQL
- Installing Glassfish Server
- Configuring Glassfish And Deploying Applications.
- Installing Win Service
- Service Configuration

Installation Contents

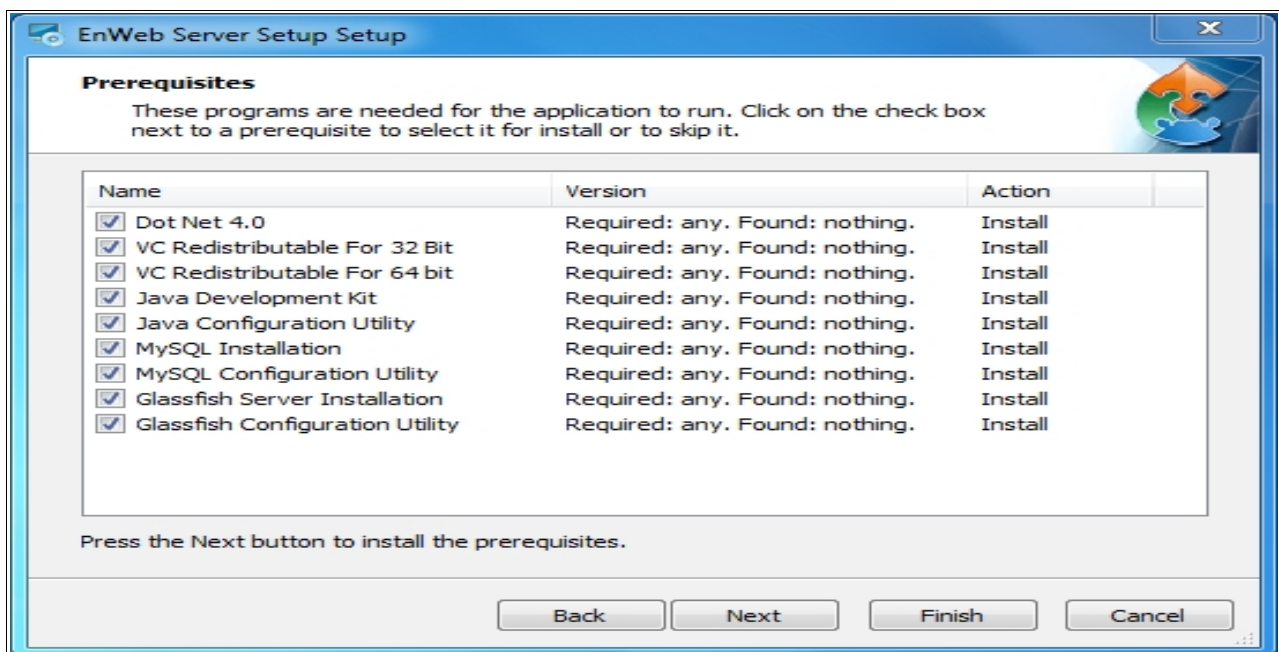
Sr. No.	Product	Associated File
1	EnWeb – Server Setup	EnWeb-Server.exe
2	Windows Service (EnWeb Client Setup)	EnWin.msi service.zip Install Win Ser.bat
3	USB to RS485 Convertor Driver	EasySync.exe

Preparing For Installation:

Click on the EnWeb-Server.exe.(Please right click on installer file and select run as installer for windows vista, 7 and 8) First thing you see is Prerequisites installation which includes softwares such as jdk, mysql and some external softwares required for mysql installation.



Click on next which will bring you to the next window where you can see list all the softwares required to be install.

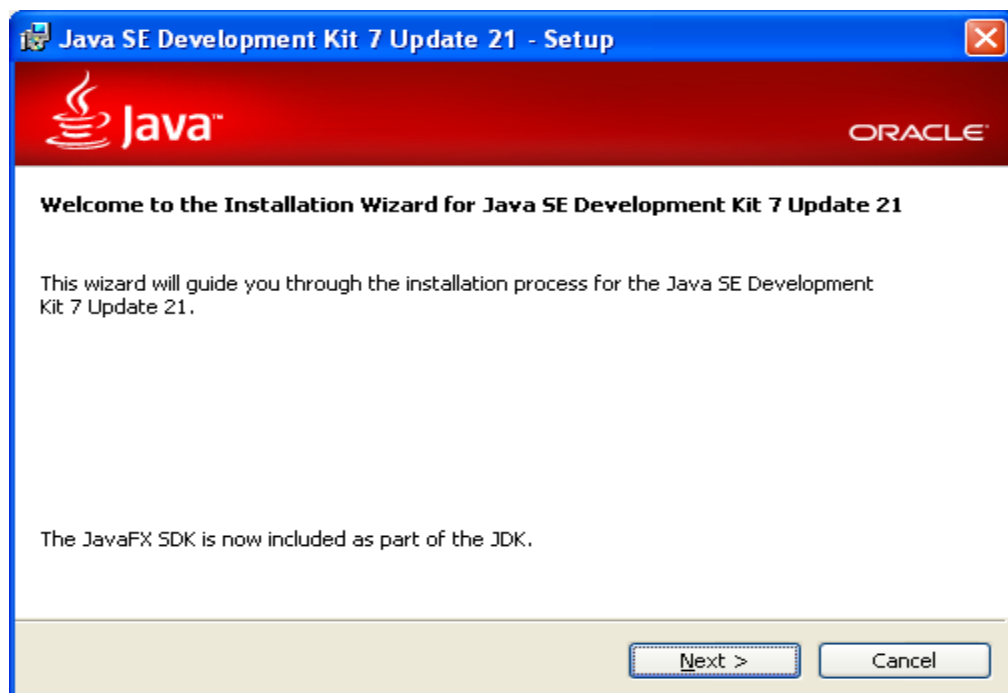


As you can see first 3 softwares from the top are required for mysql installation. Please note that VC Redistributable software comes with two variation one for 32 bit machine and other for 64bit machine. Please choose appropriate version according to your system architecture.

Installing JDK

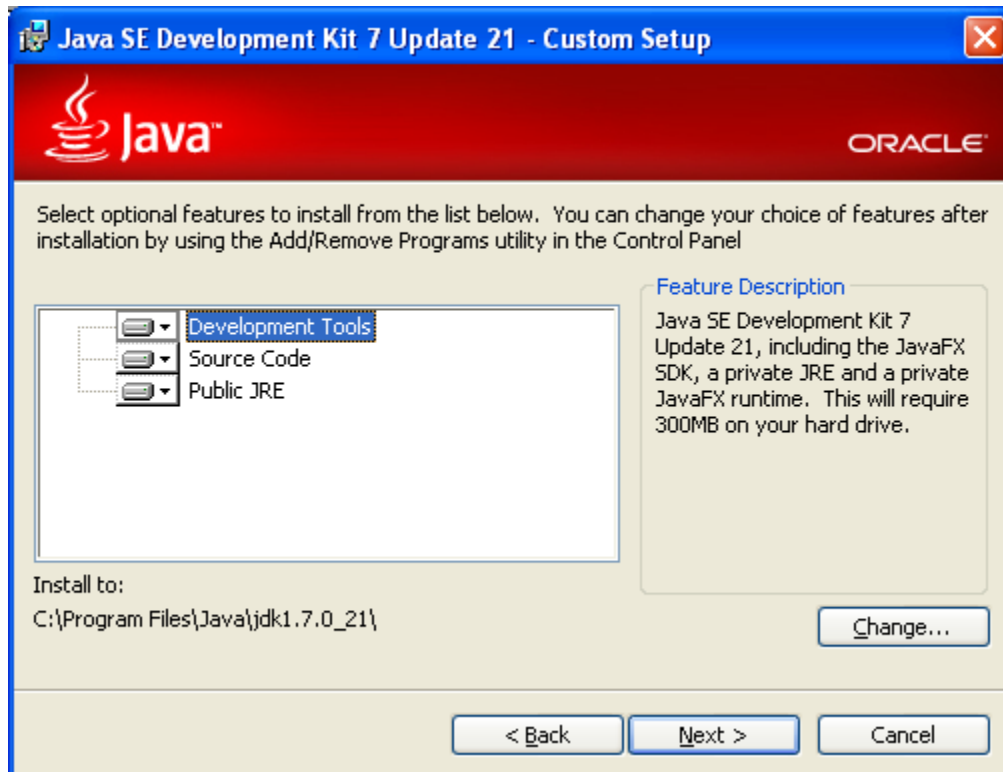
Double-click on “jdk-7u21-windows-i586.exe”

Following dialog will appear

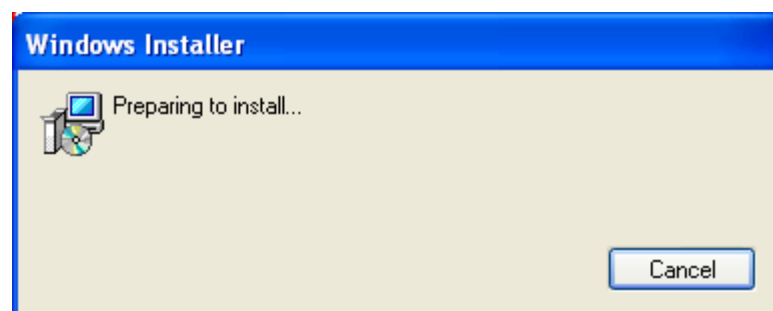
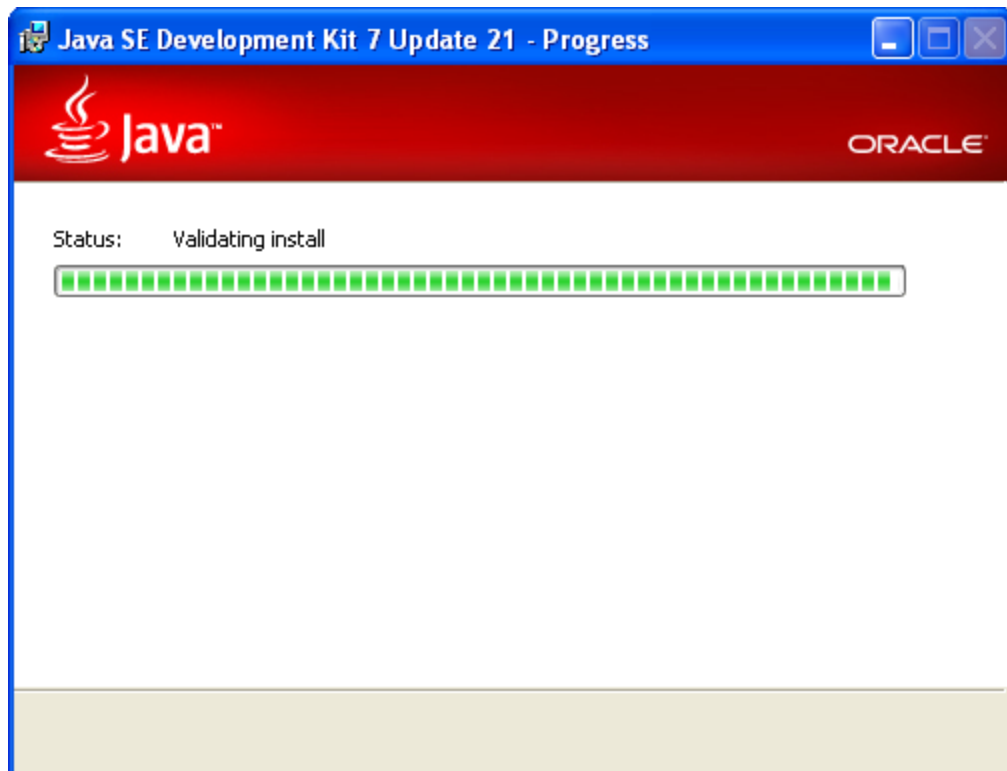


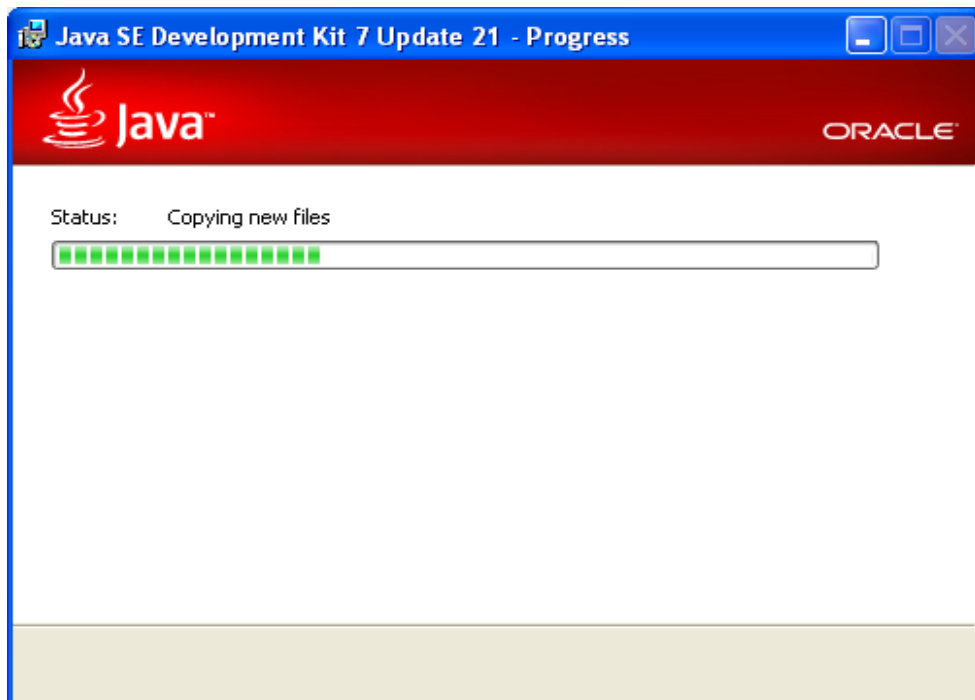
Click on “Next >” button

Please Note: At any point during installation click on “Cancel” button to cancel installation

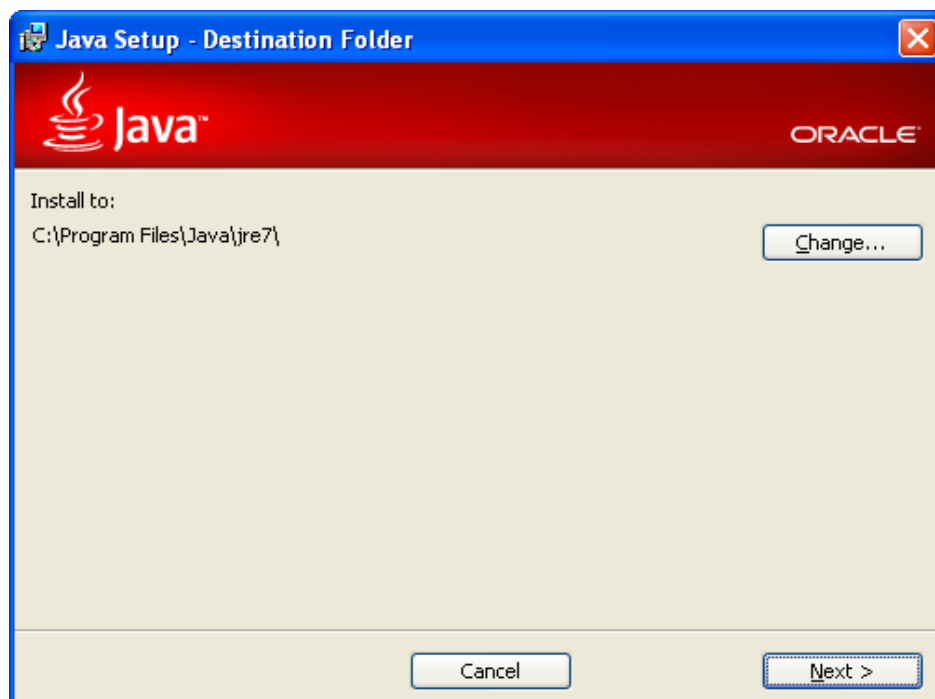


Click on “Next >” button, following dialogs will appear





Select Destination Folder (recommended path is the default Install to path)
Click on "Change..." button if installation path needs to be changed

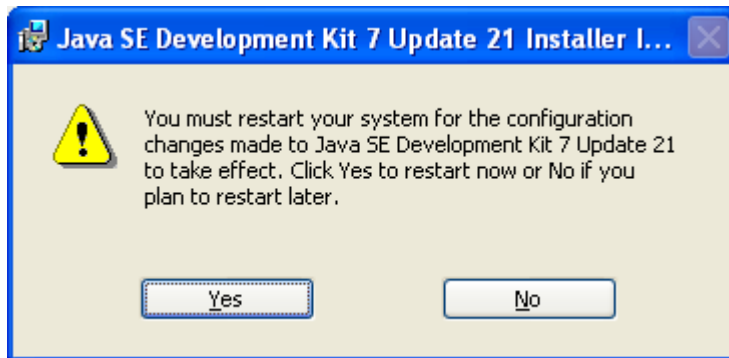


Click on "Next >" button



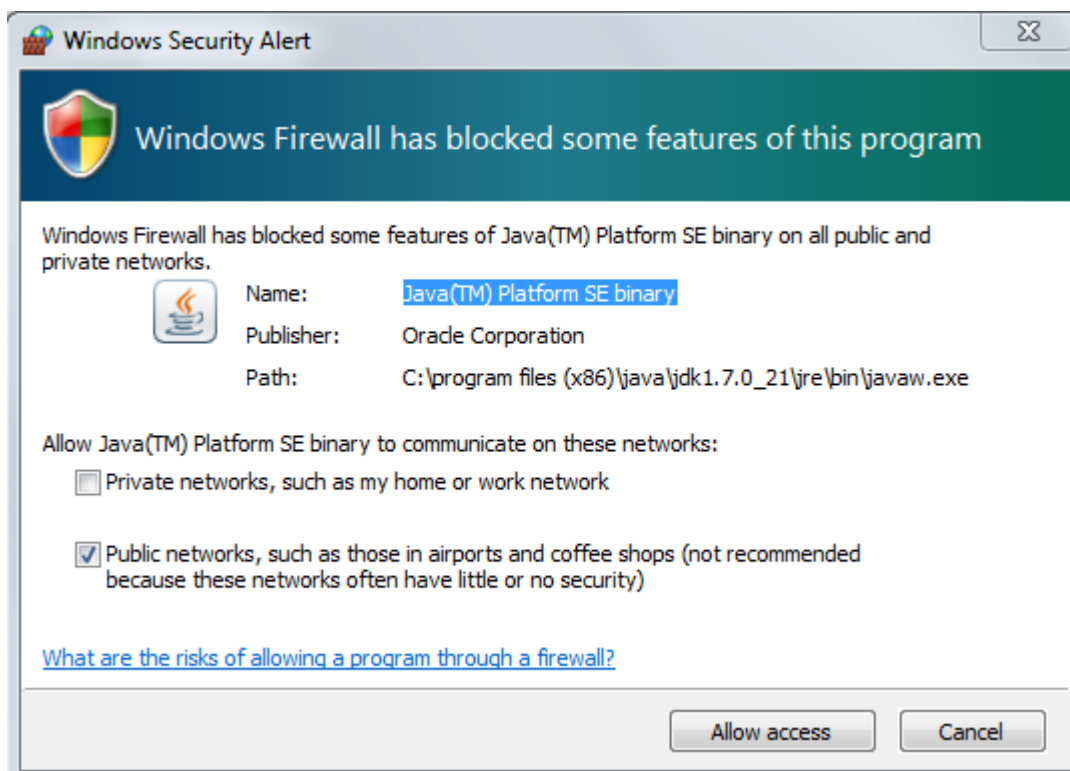
Click on "Close" button

Message will be prompted to restart system. Click on “Yes” button



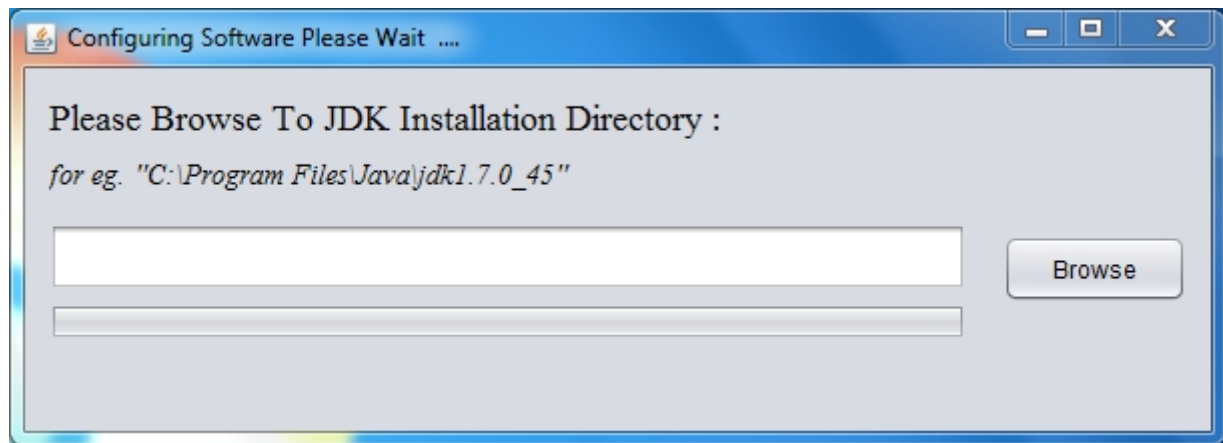
JDK Installation is complete

Please Note: During installation process if any Windows Security Alert is prompted with regards to firewall for JDK then click on “Allow access” button as shown in following dialog

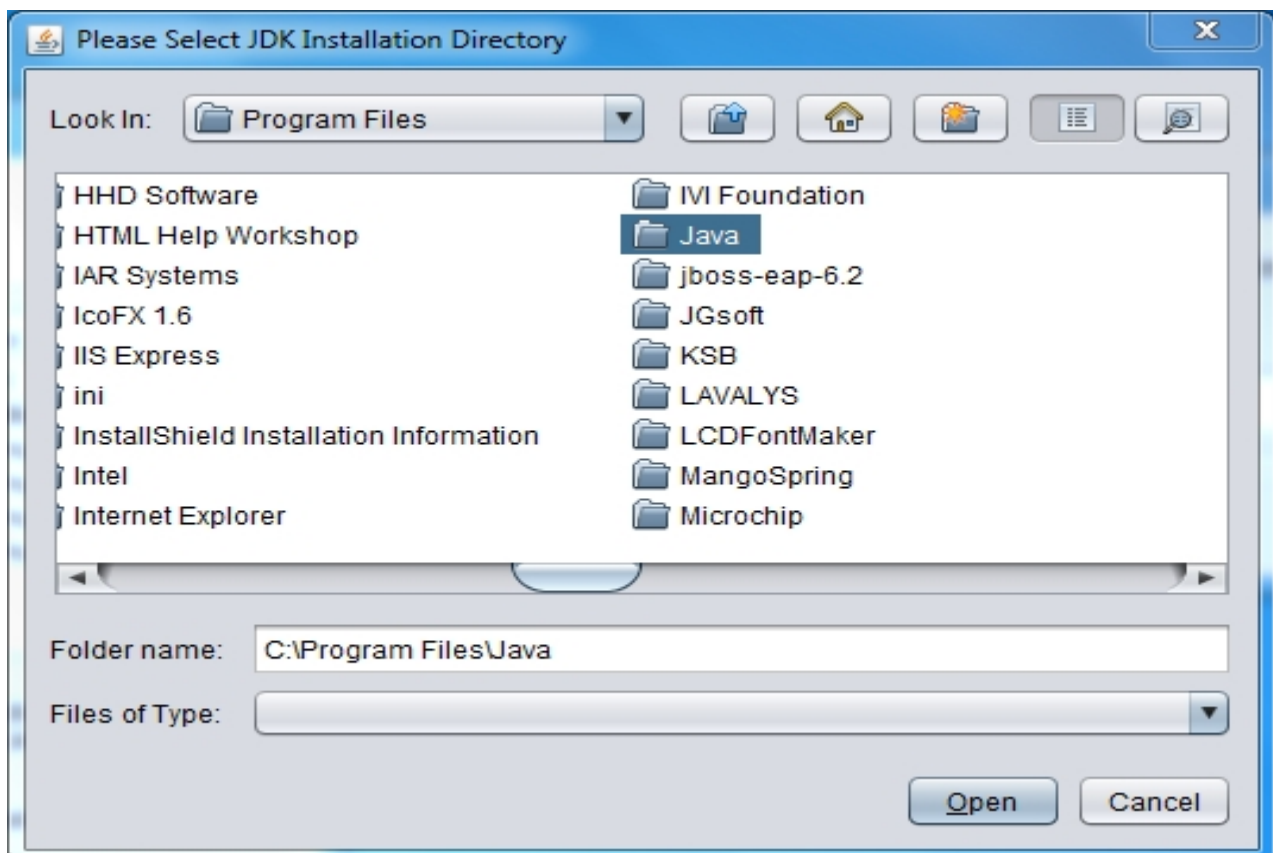


Configuring JDK.

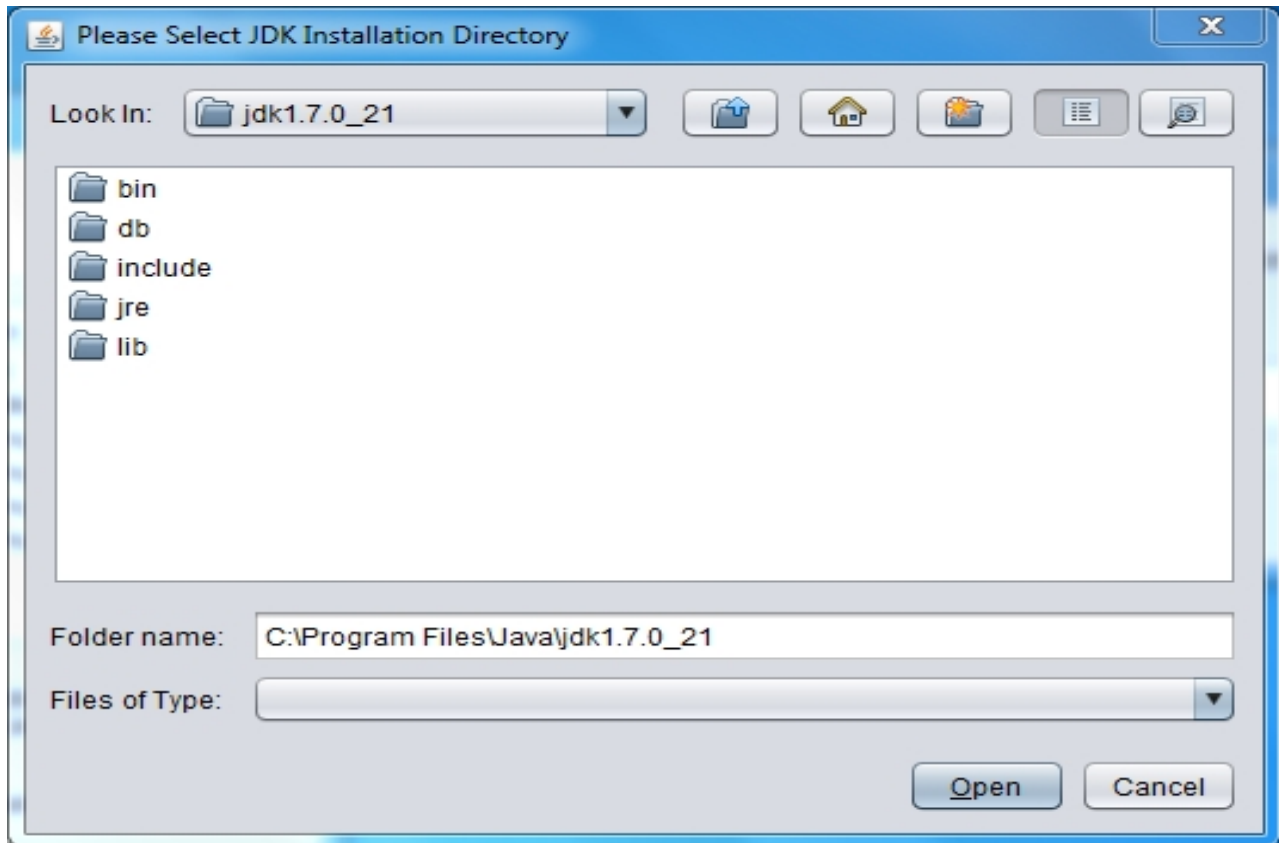
Once the jdk installation completed it needs to be configured before installation of other softwares proceeds. So for that purpose once the installation completed you will see windows like below picture which configures java in your system.



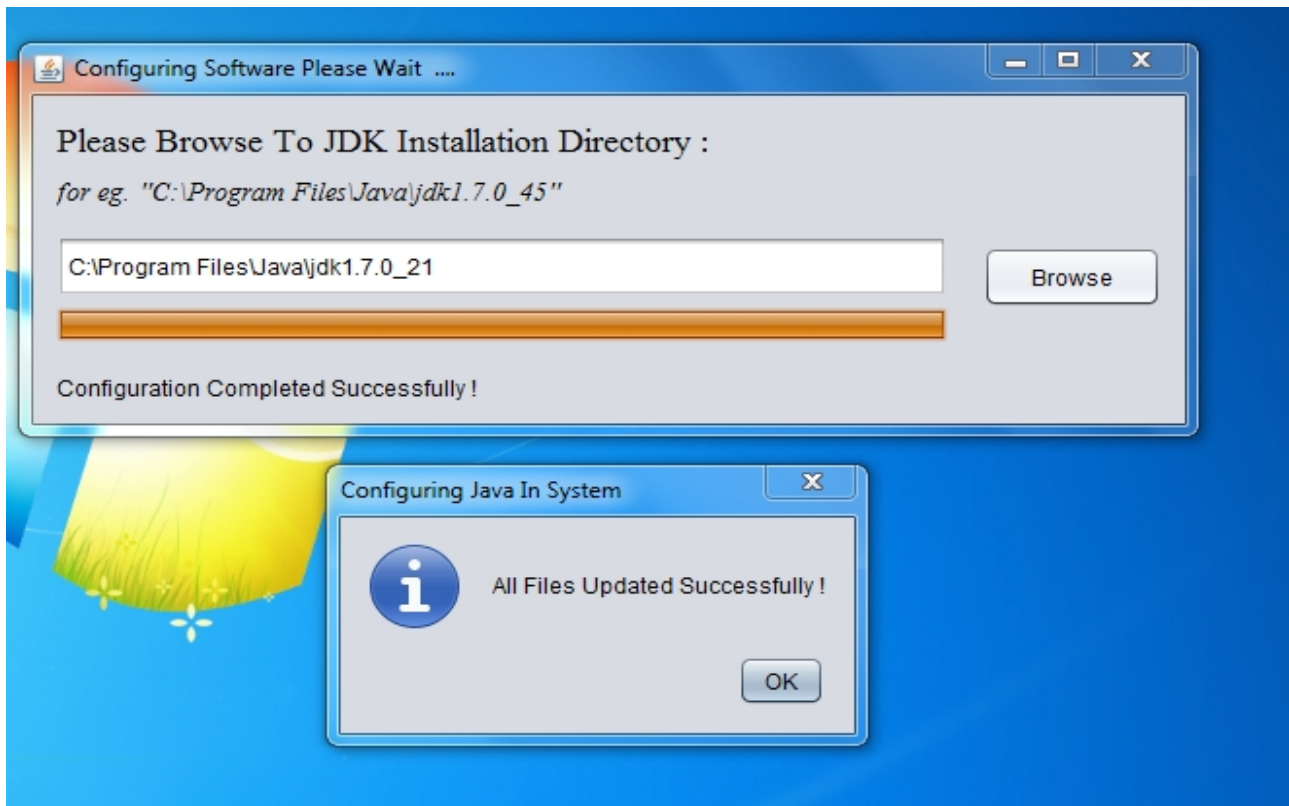
Click on Browse Button it will shows you a folder selection dialog box as follows:



Please browse to directory where you have installed jdk for eg :
 "C:\Program Files\Java\jdk1.7.0_21". Note that jdk comes with your software bundle might be updated so this 1.7.0_21 no. might be different at your system according to jdk version you install in previous step. All you have to remember is to browse to directory with directory path structure similar as above.



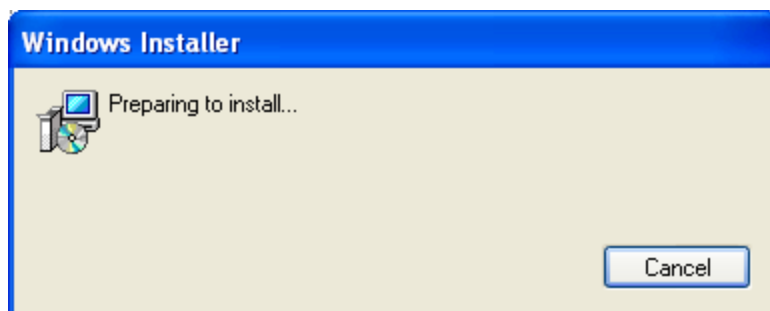
Once you in right directory click on open and software will proceed with configuration.



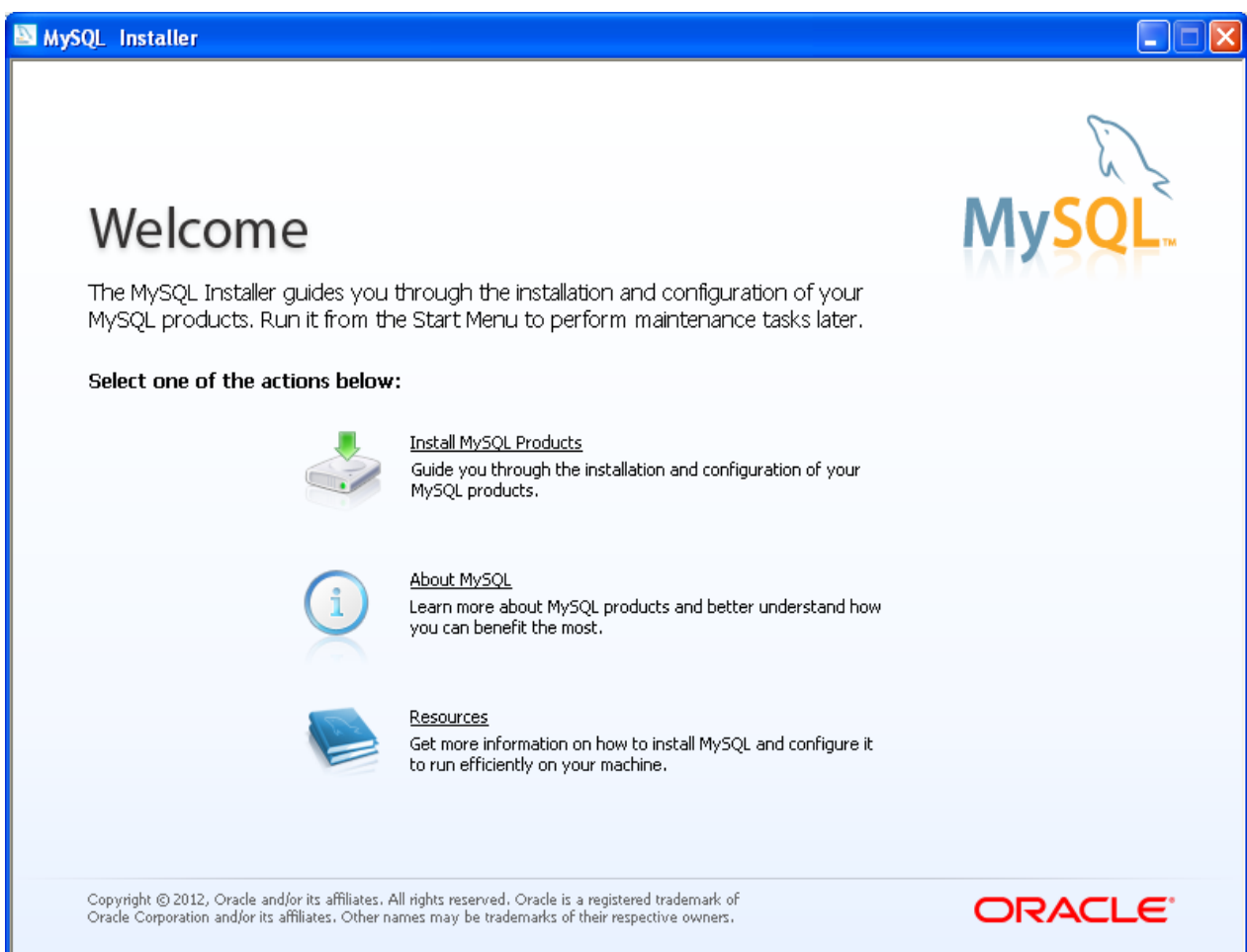
Once configuration completed successfully you will be prompted with message box like in above picture click on ok and close the software by clicking on close.

Installing MySQL :

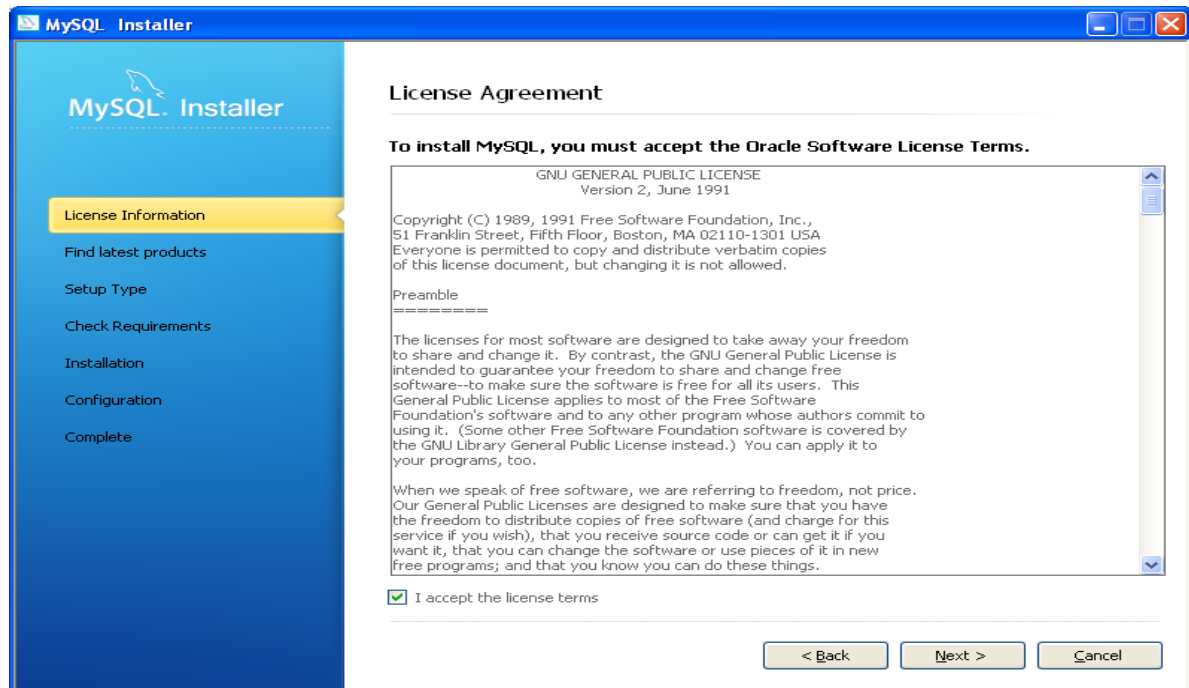
Once you close the jdk configuration utility mysql installation will proceed. Please note here that along with mysql installation another utility for mysql configuration will also get launch. So first complete the installation of mysql and then proceed with configuration utility.



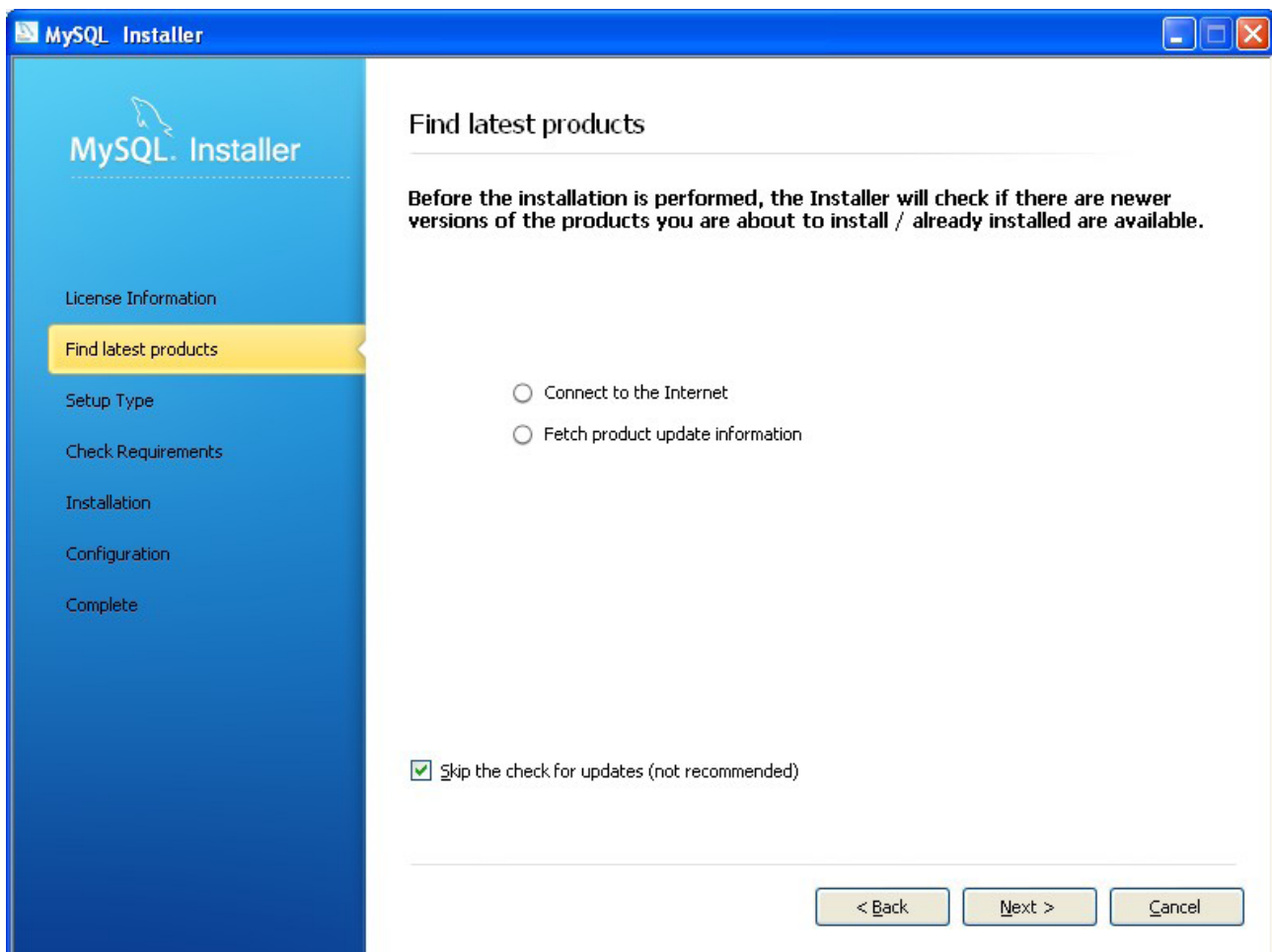
Click on “Install MySQL Products” link



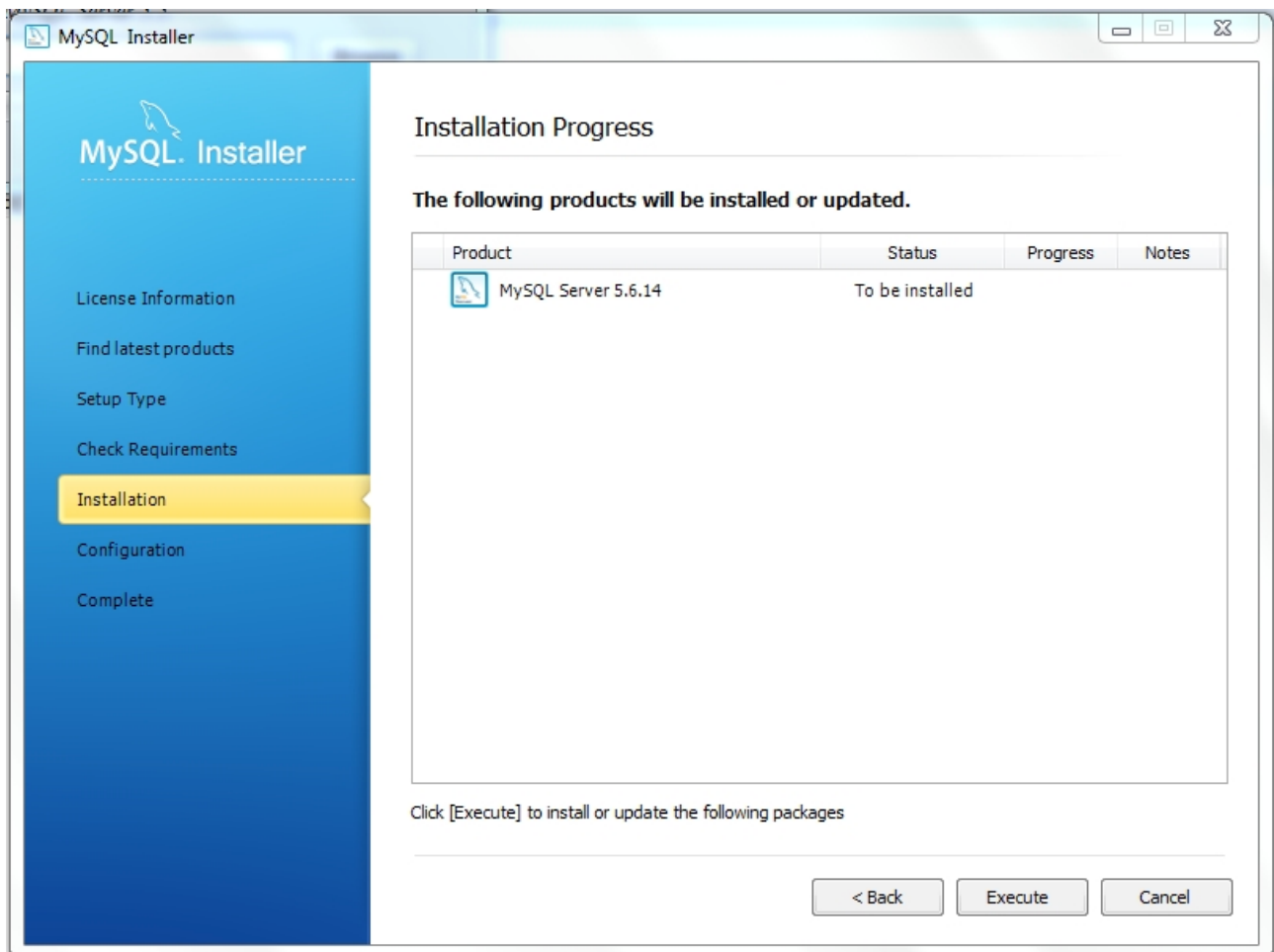
Select “I accept the license terms” check-box and click on “Next >” button



Select “Skip the check for updates” and click on “Next >” button

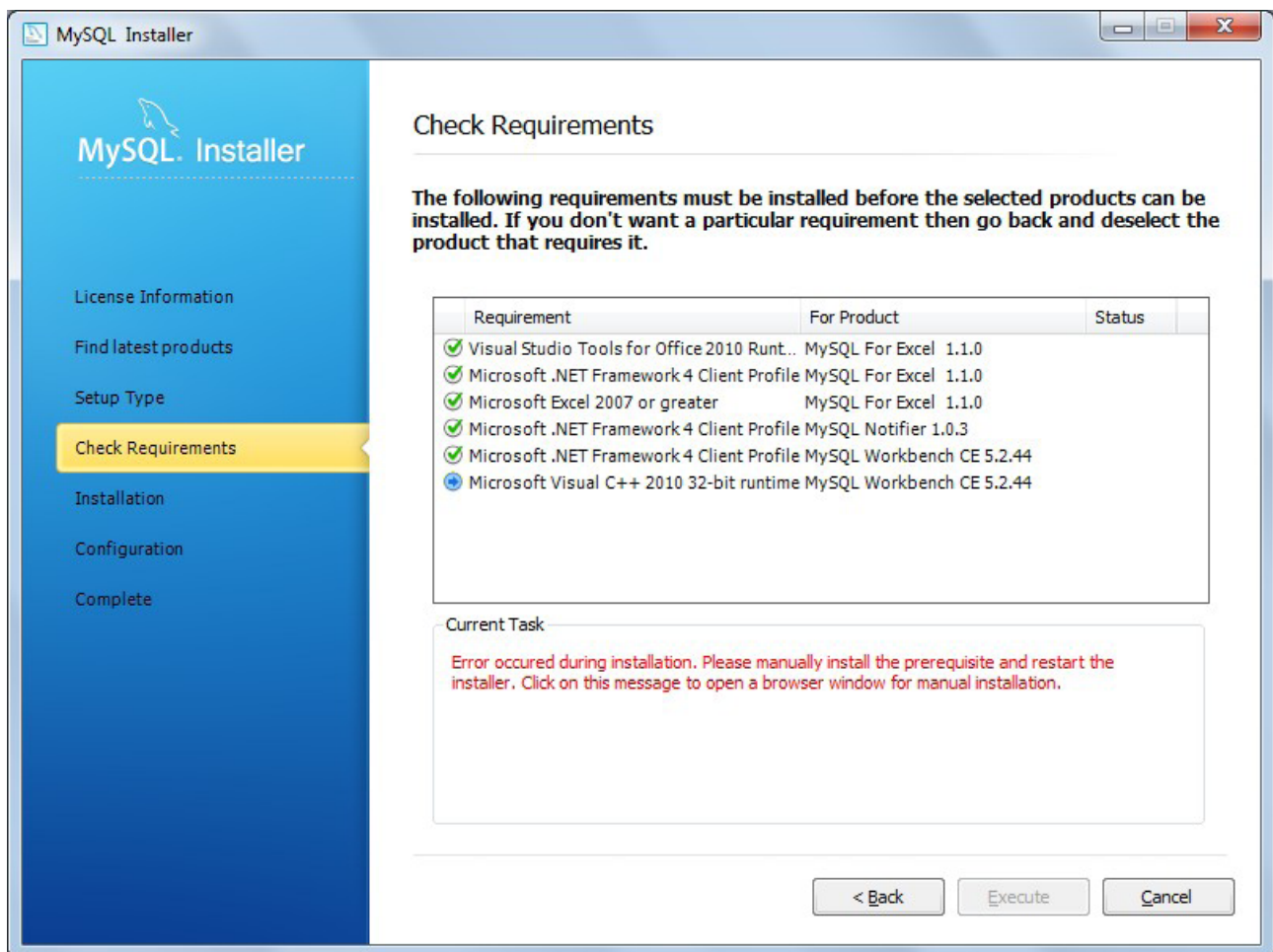


Select “Server Only” check-box and update Installation Path and Data Path (recommended path is the default path). Click on “Next>” button



Click on “Execute” button.

Please Note: If any of the pre-requisites are missing then they need to be installed first before proceeding to the next step. If any of the pre-requisites are missing then below dialog will be shown

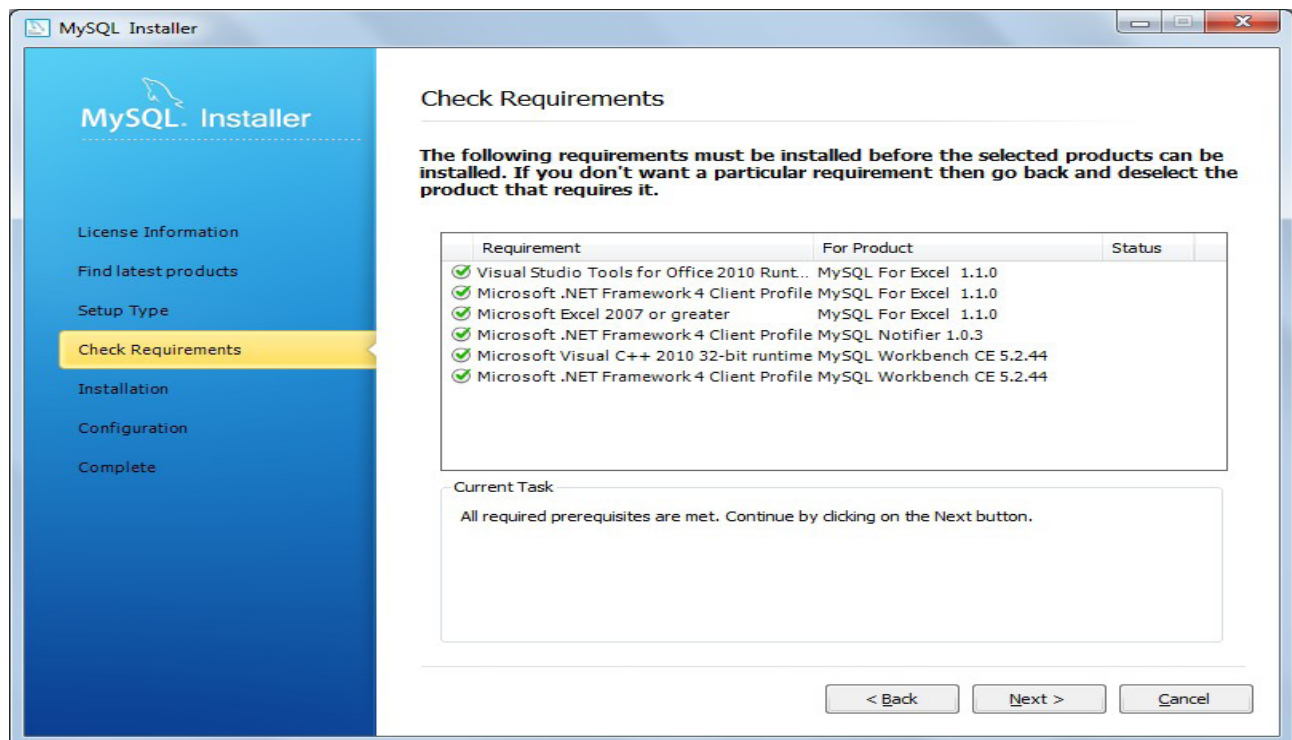


If any of the pre-requisites are missing, then it will get highlighted with a blue arrow. All pre-requisites are listed at top of installation list so you may never have encounter this error again.

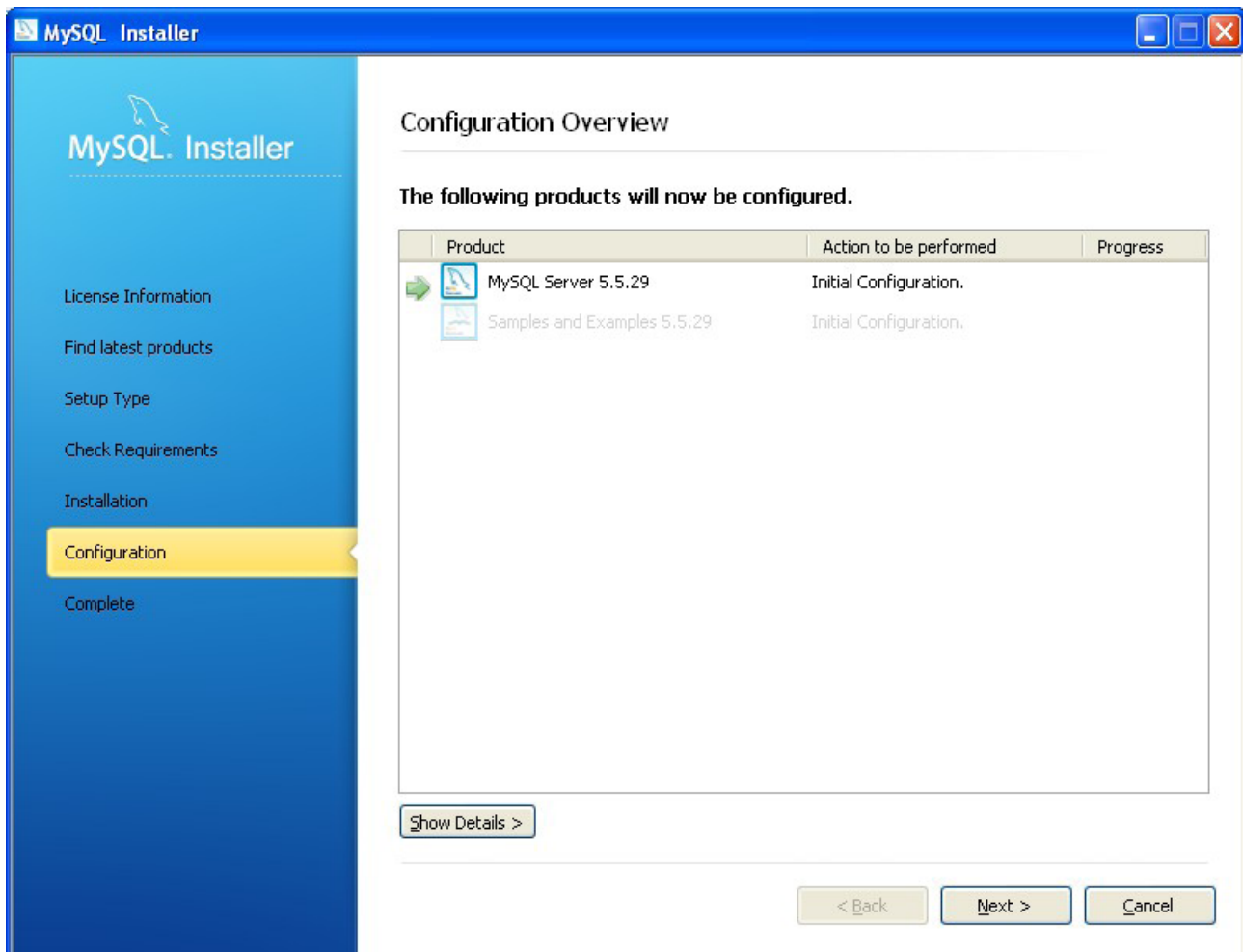
Following table explains pre-requisites against required installer.

Sr. No.	Pre-requisites	Installer Name
1	Microsoft Visual C++ 2010 32 bit runtime MYSQL Workbench CE 5.2.44	vcredist_x86.exe (32 Bit)
2	Microsoft Visual C++ 2010 32 bit runtime MYSQL Workbench CE 5.2.44	vcredist_x64.exe (64 Bit)
3	Microsoft .Net Framework 4 Client Profile MySQL for Excel 1.1.0	dotNetFx40_Client_setup.exe

If all pre-requisites are met then following dialog will be displayed.

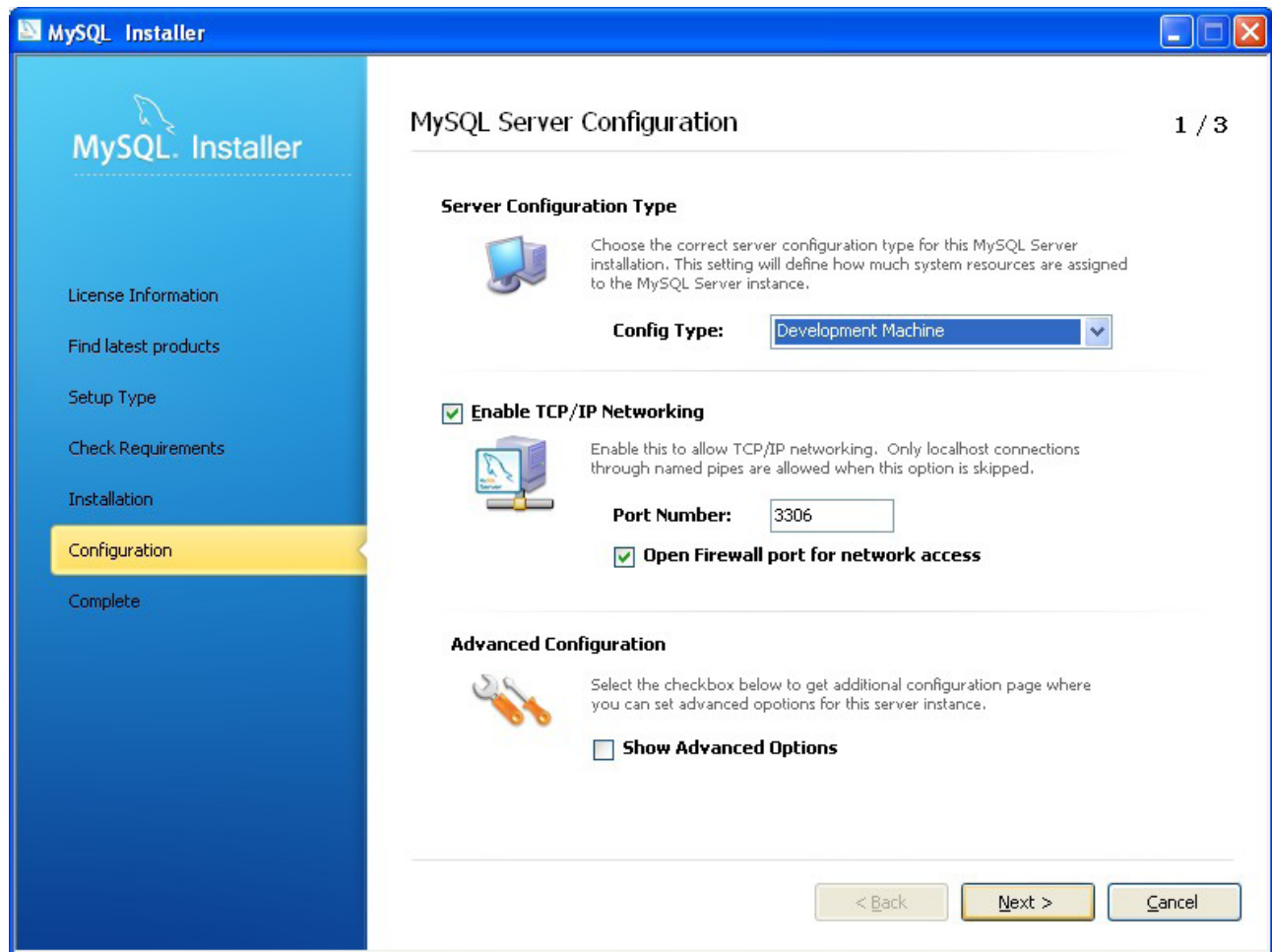


Individual product will get configured. Click on “Next>” button.

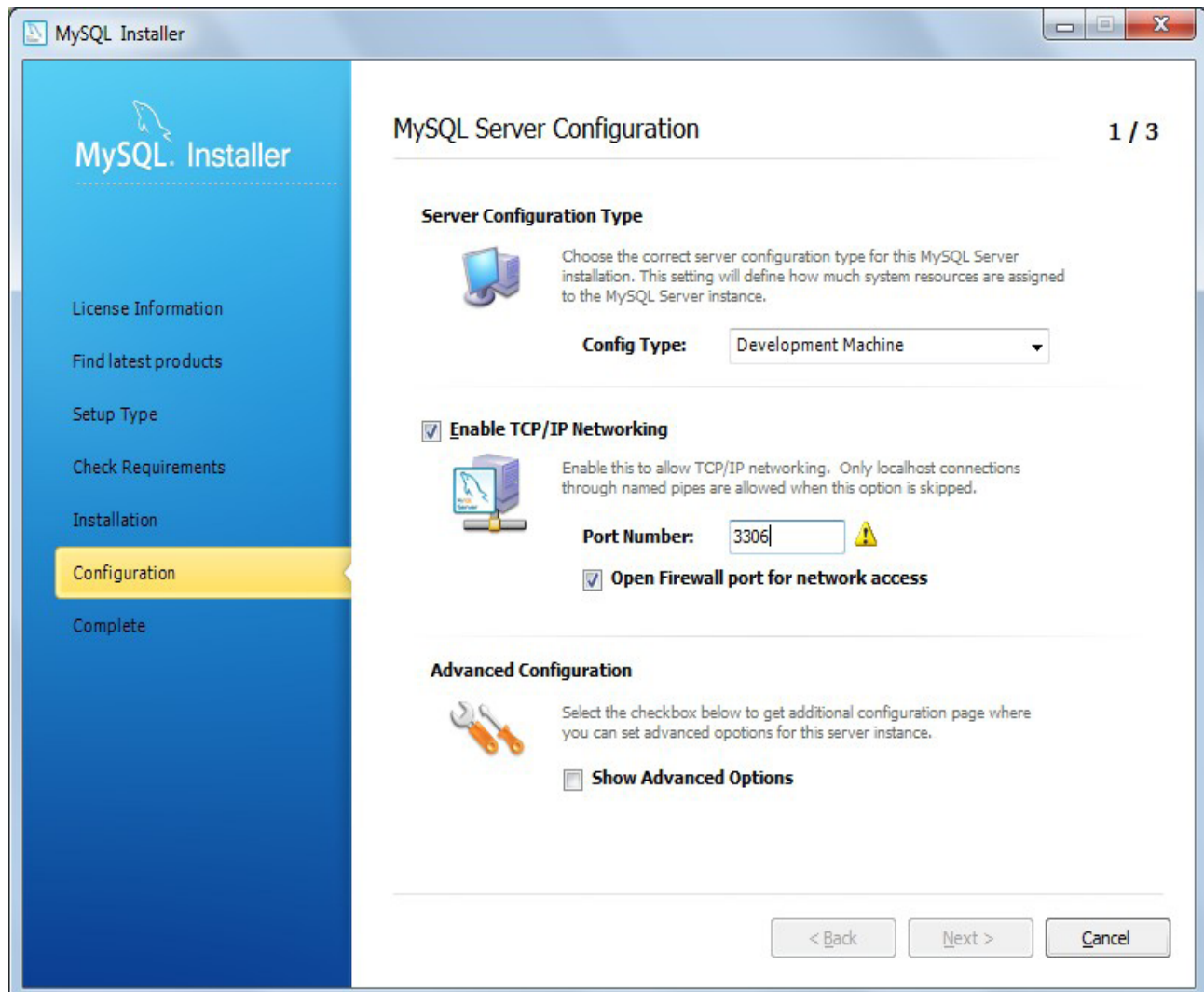


Click on “Next” button

Set Config Type as Development Machine and Port Number as 3306

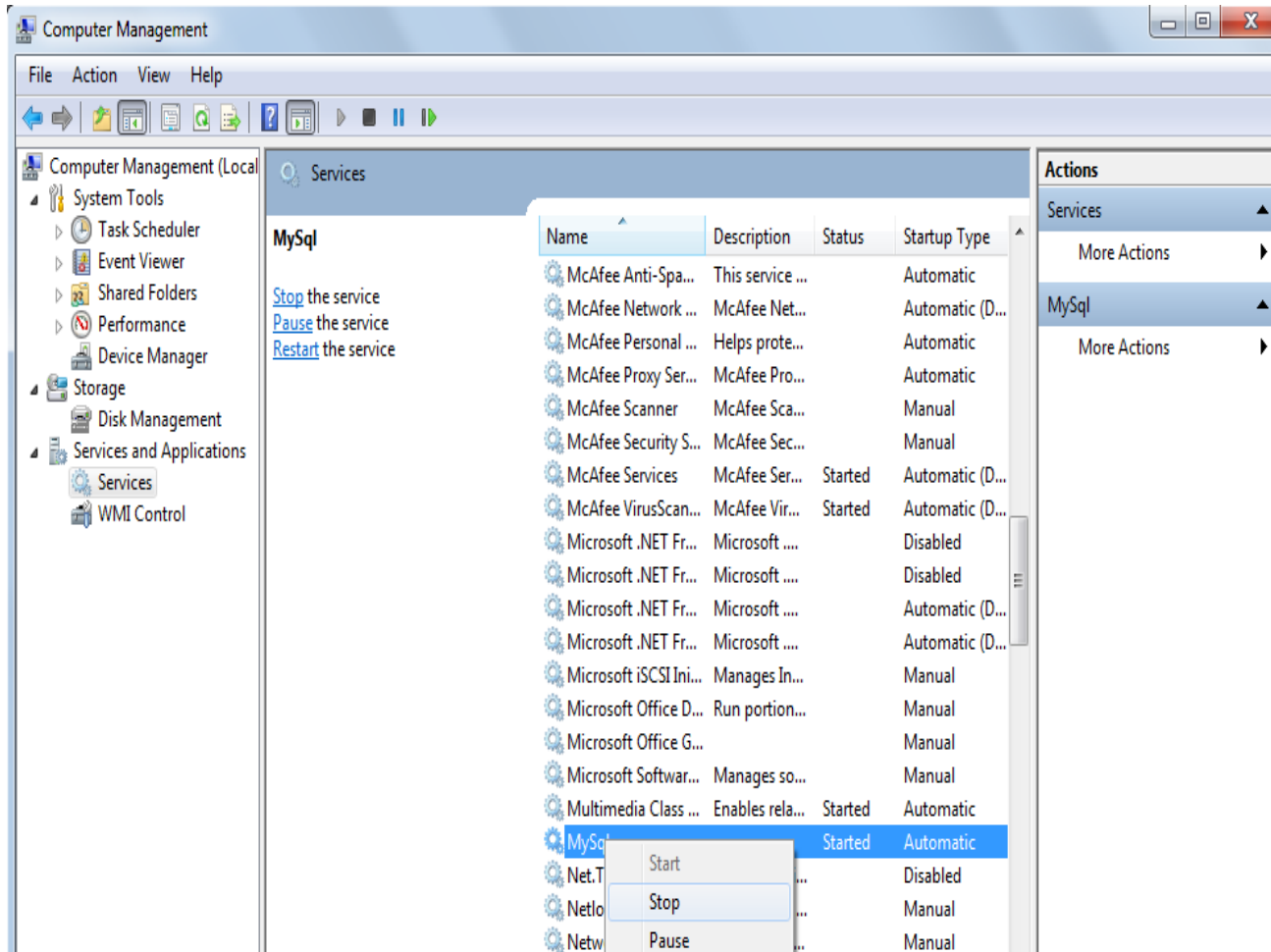


Please Note: If port 3306 is not available then a yellow exclamation mark will appear against port number and “Next >” button will not get enabled as shown below.

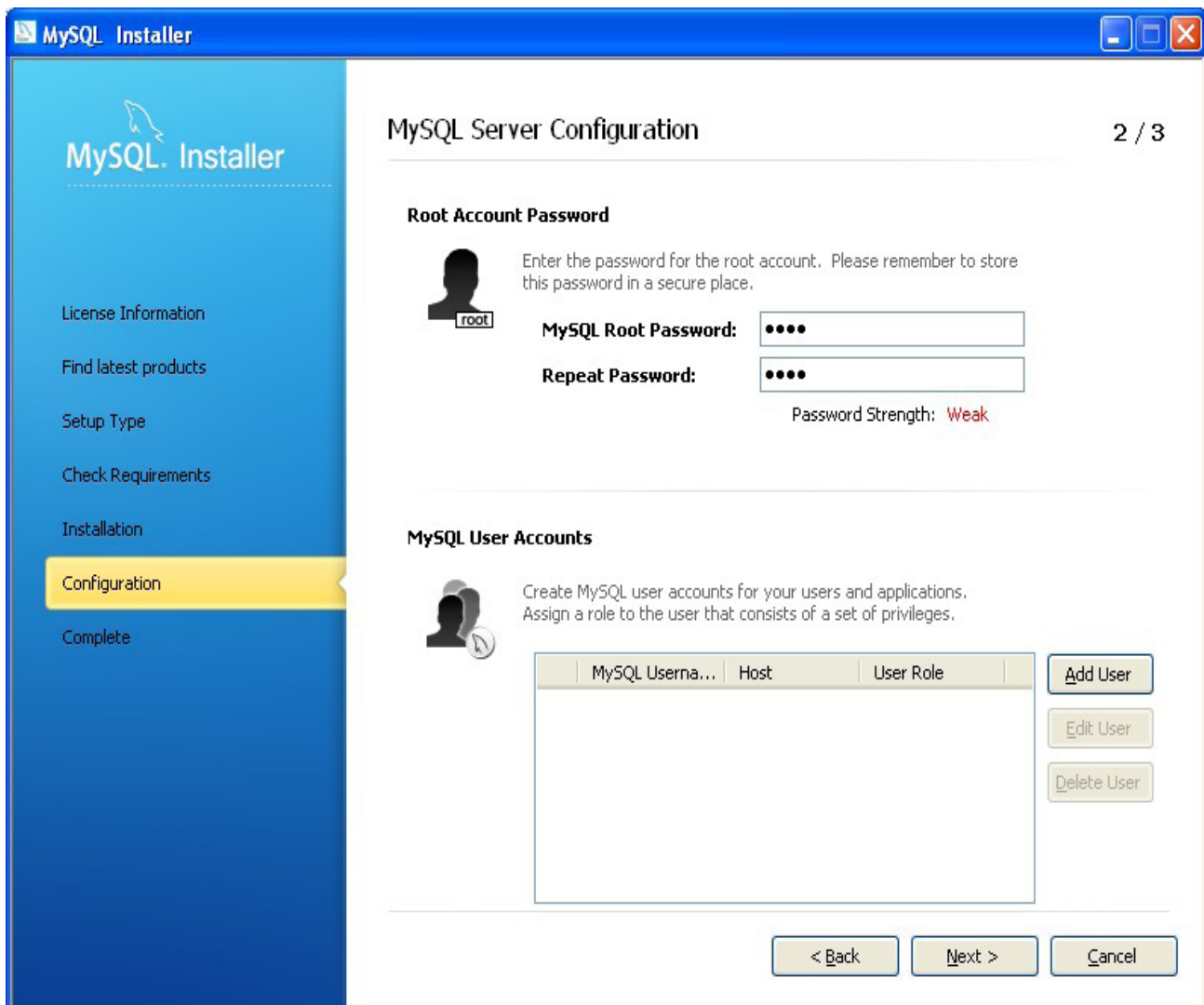


To resolve port error carry out the following steps:

My Computer (Right-click) > Manage > Services and Applications > Services > Right-click on MySQL service and select stop option as shown below :



Enter MySQL Root Password as “root” and re-enter the same password in Repeat Password field and click on “Next >” button



The screenshot shows the MySQL Installer window at the 'Configuration' step (2 / 3). The left sidebar lists the installation steps: License Information, Find latest products, Setup Type, Check Requirements, Installation, Configuration (highlighted), and Complete. The main area is titled 'MySQL Server Configuration' and contains two sections:

Root Account Password

Enter the password for the root account. Please remember to store this password in a secure place.

MySQL Root Password: [Password field with 4 dots]

Repeat Password: [Password field with 4 dots]

Password Strength: **Weak**

MySQL User Accounts

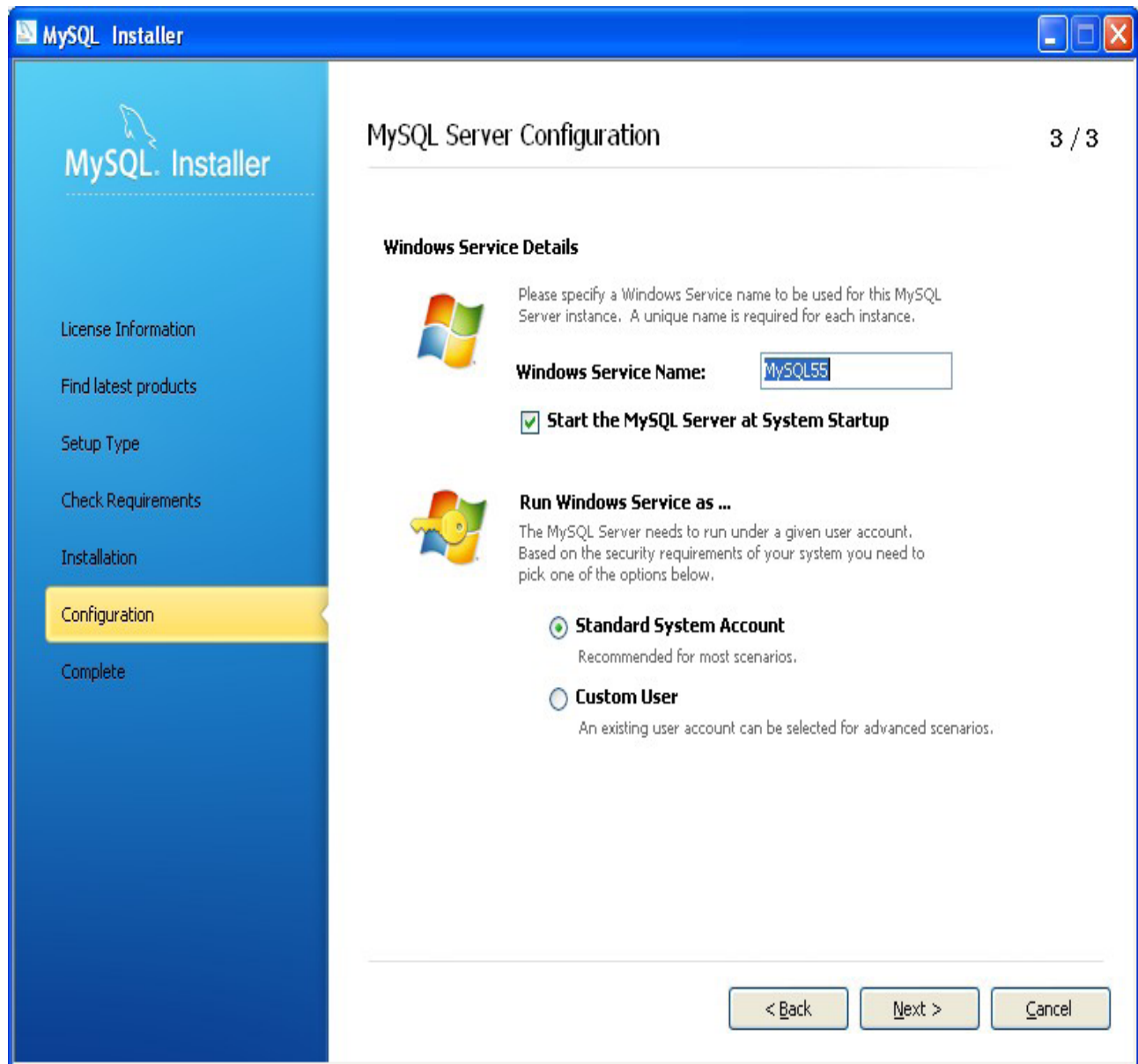
Create MySQL user accounts for your users and applications. Assign a role to the user that consists of a set of privileges.

MySQL Userna...	Host	User Role

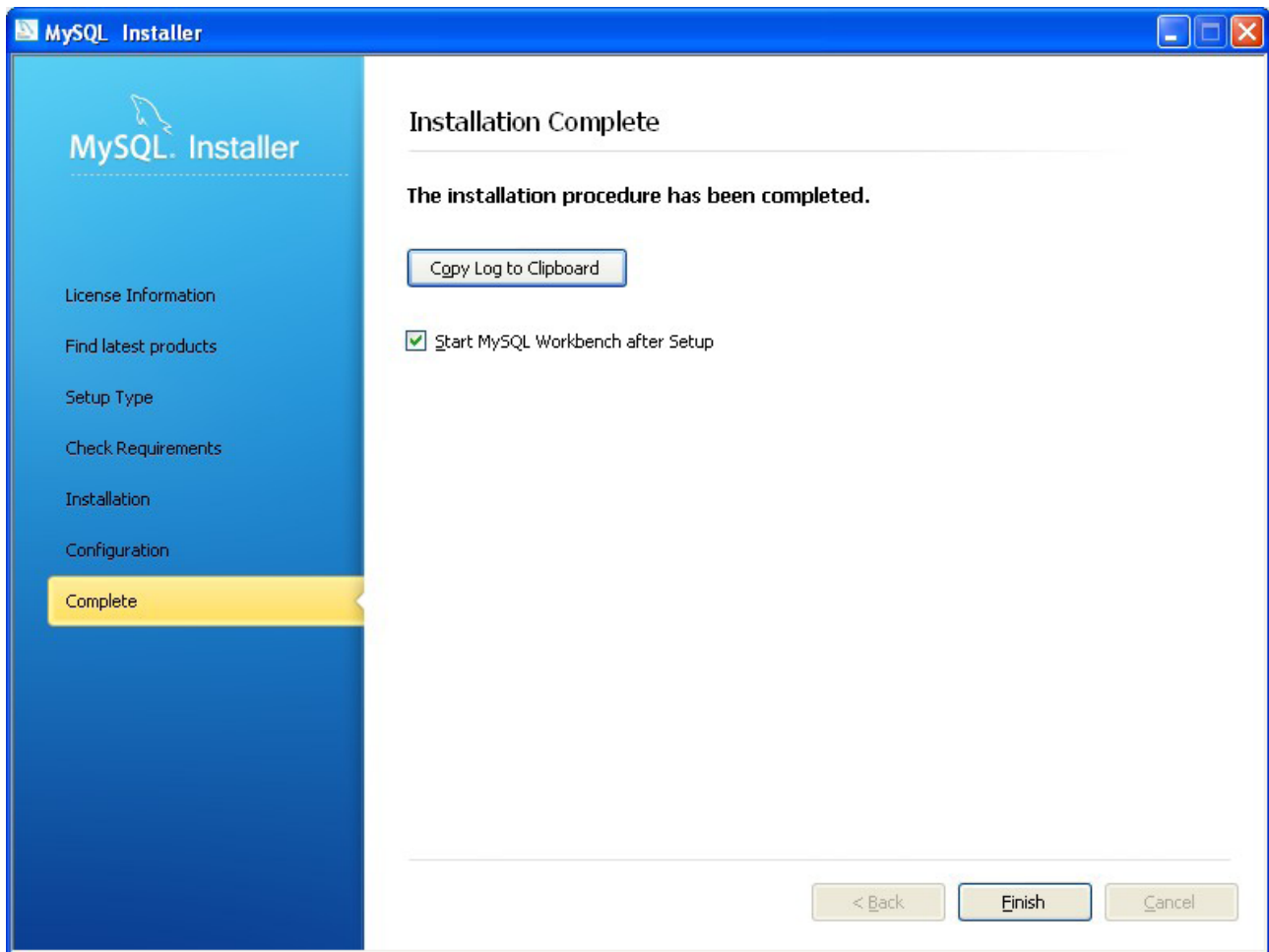
Buttons: Add User, Edit User, Delete User

Navigation buttons at the bottom: < Back, Next >, Cancel

Click on "Next >" button



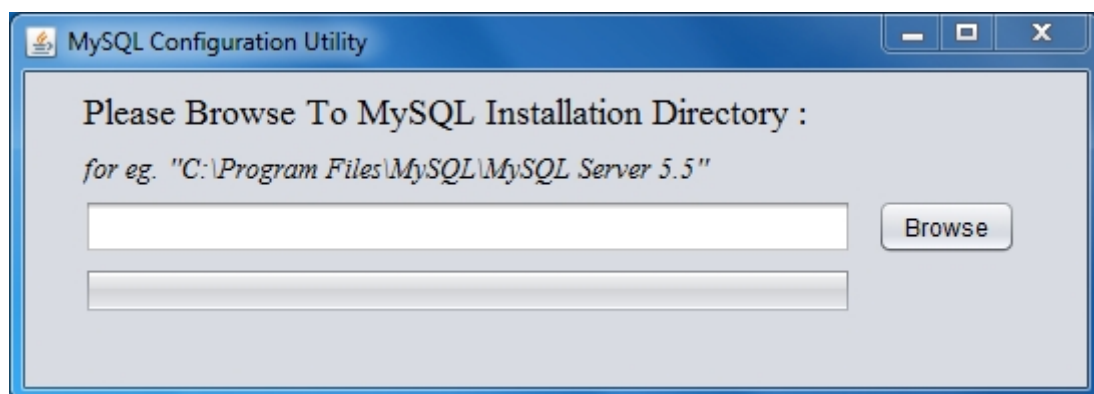
Click on "Next >" button



Please note here that since you only installed mysql server only you will not shown start MySQL workbench checkbox option.

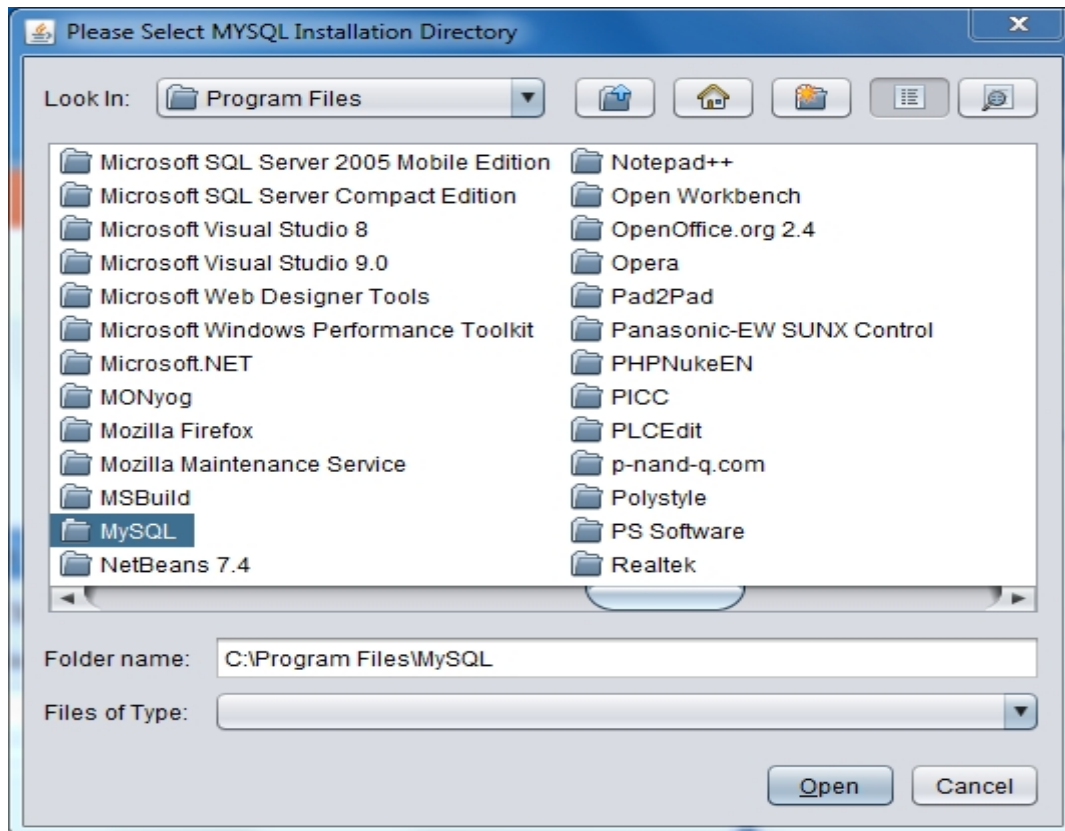
MySQL Configuration.

Once you done with mysql installation proceed with mysql configuration utility.

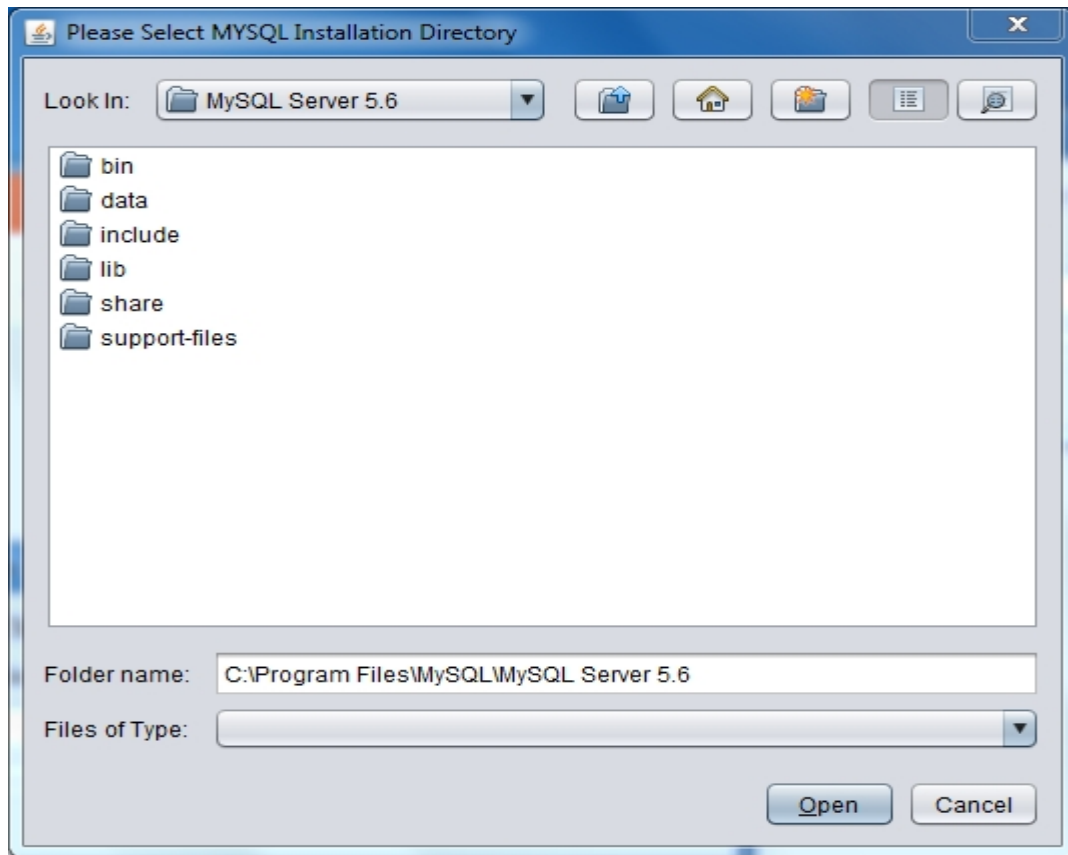


This utility performs 2 primary task.First it sets environment variable in your system and then load the application data into database.

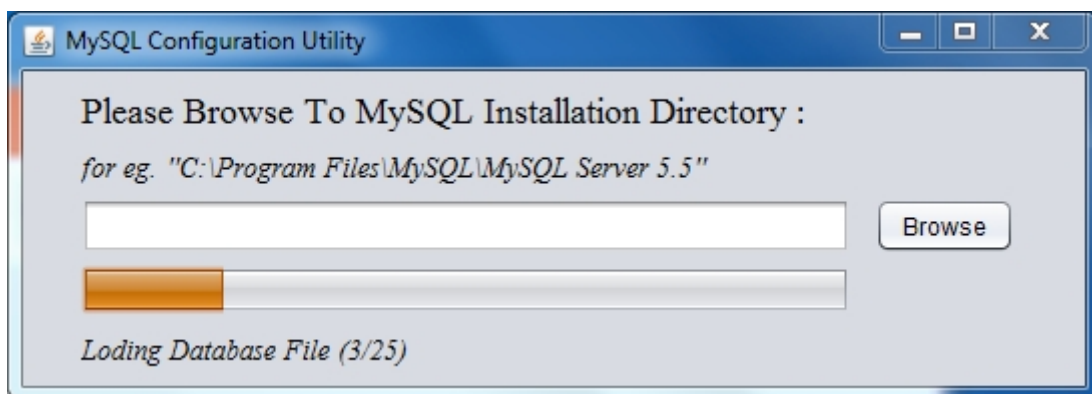
As you did with previous jdk configuration utility you need to follow same steps here.Click on browse button which open folder open dialog box.



Please browse to mysql directory and select mysql-server folder and click on open.



Once you select correct directory process should begin to configure your mysql .

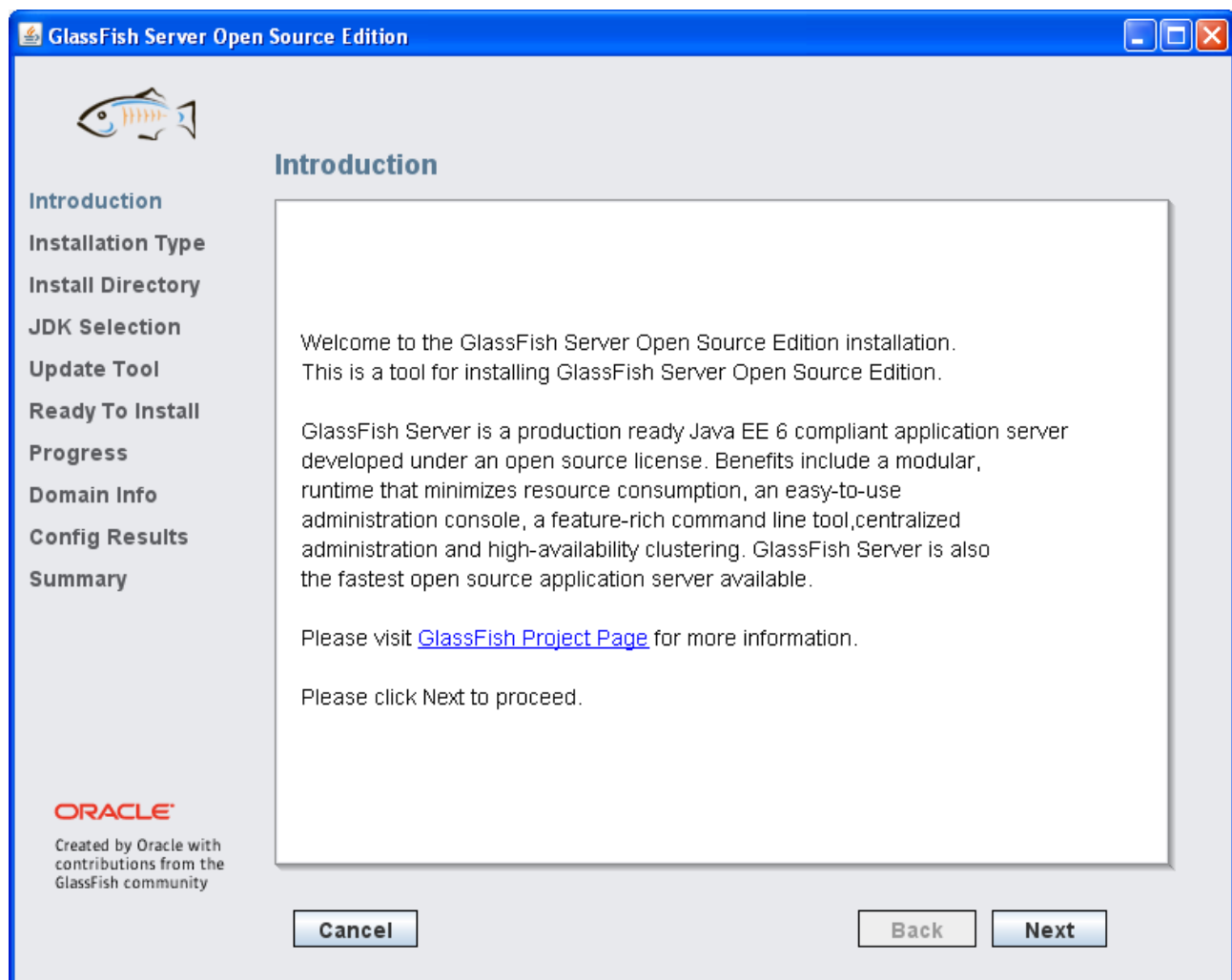


Once the process completed close the utility by clicking on close button.

Installing Glassfish Server

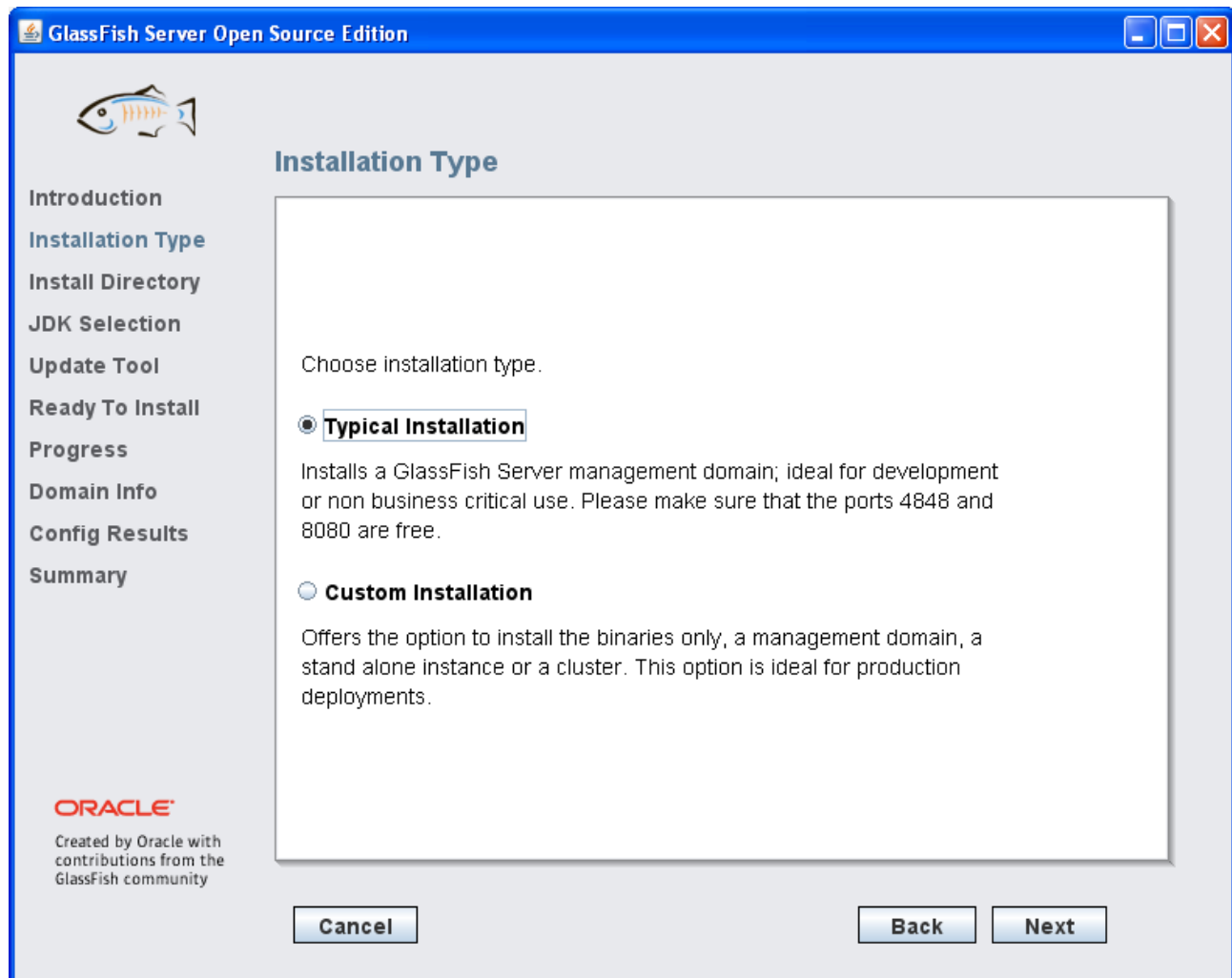
Extracting installation files...

Launching Java(TM) 2 Runtime Environment...

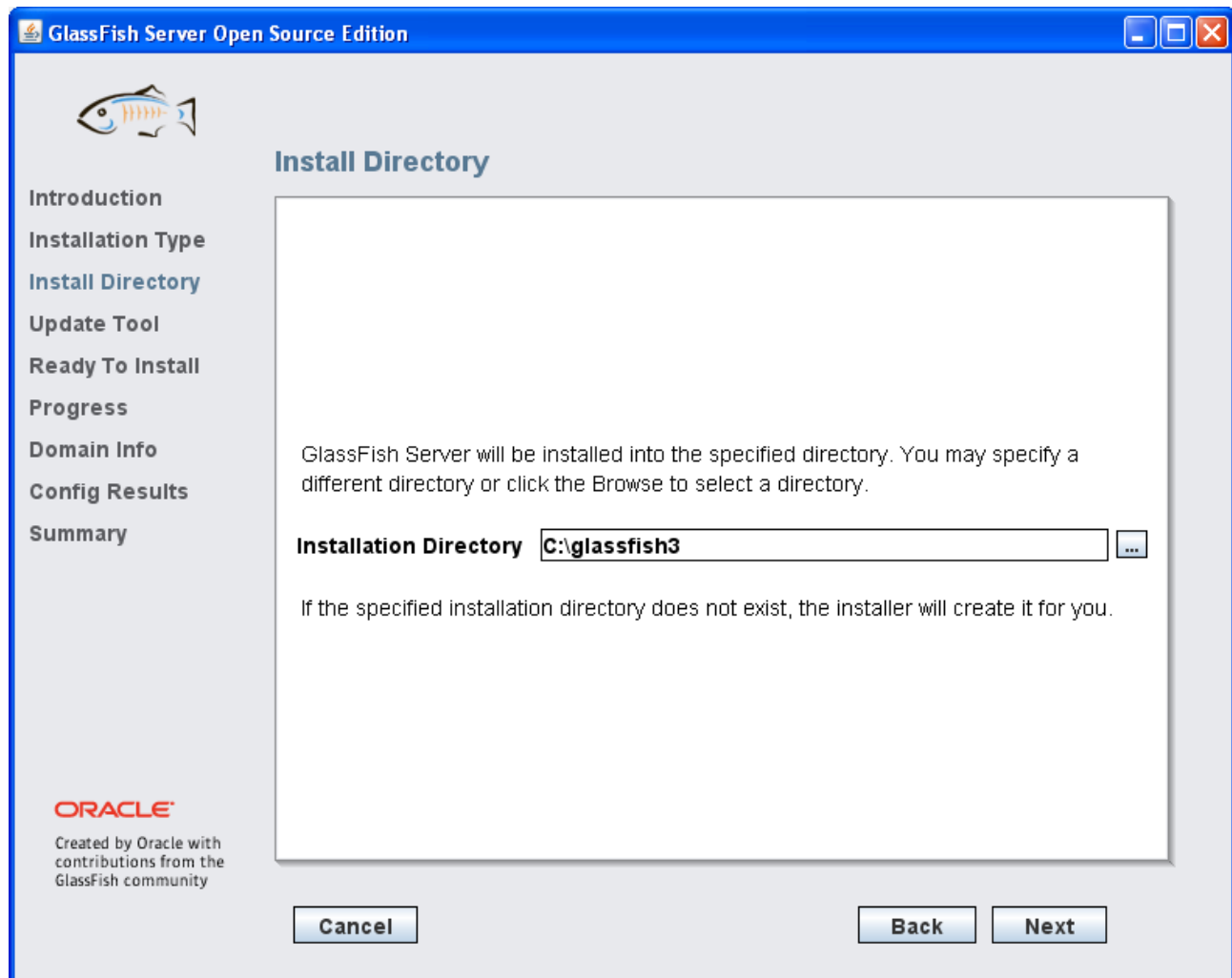


Click on "Next" button

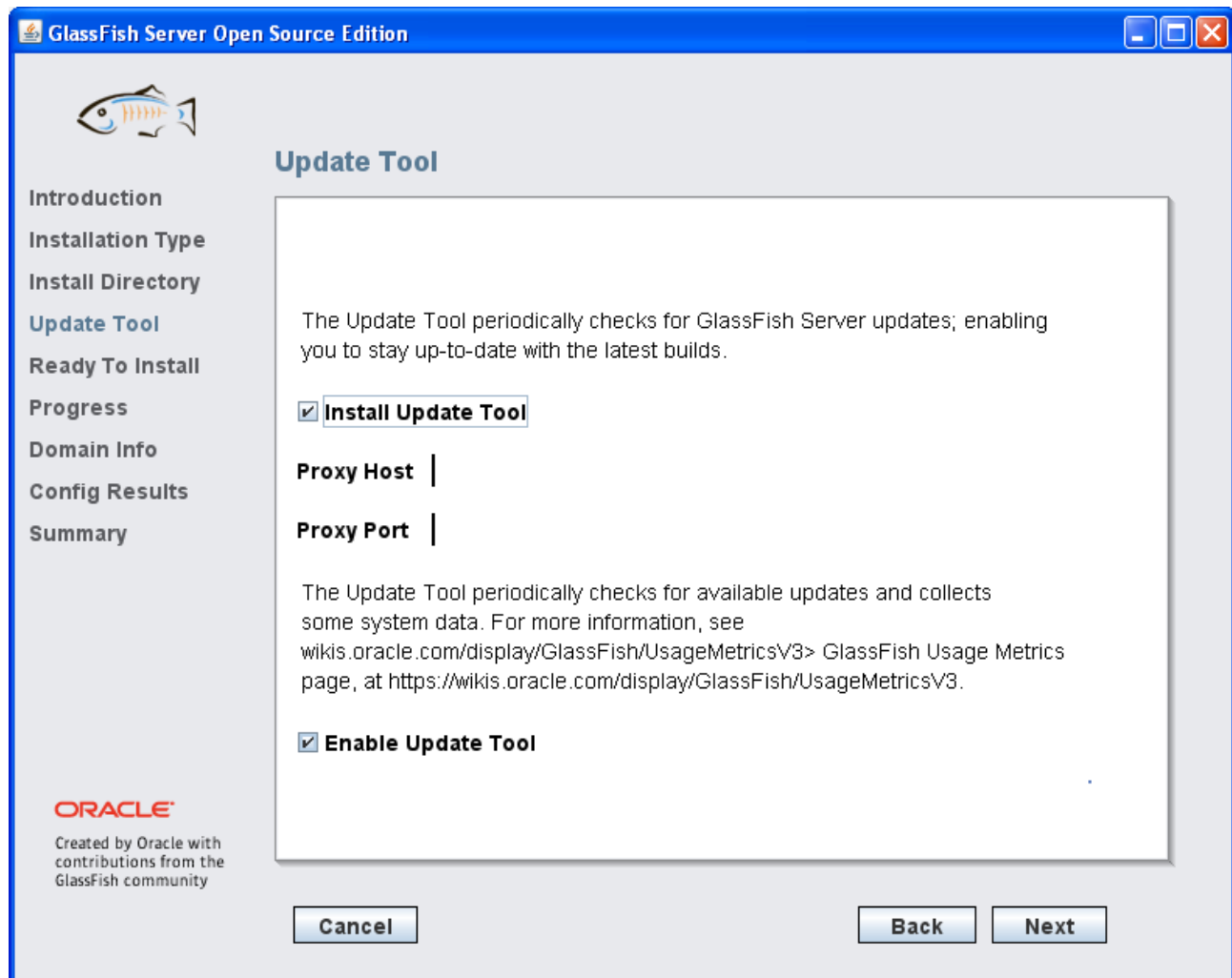
Select "Typical Installation" Check-Box and Click on "Next" button.



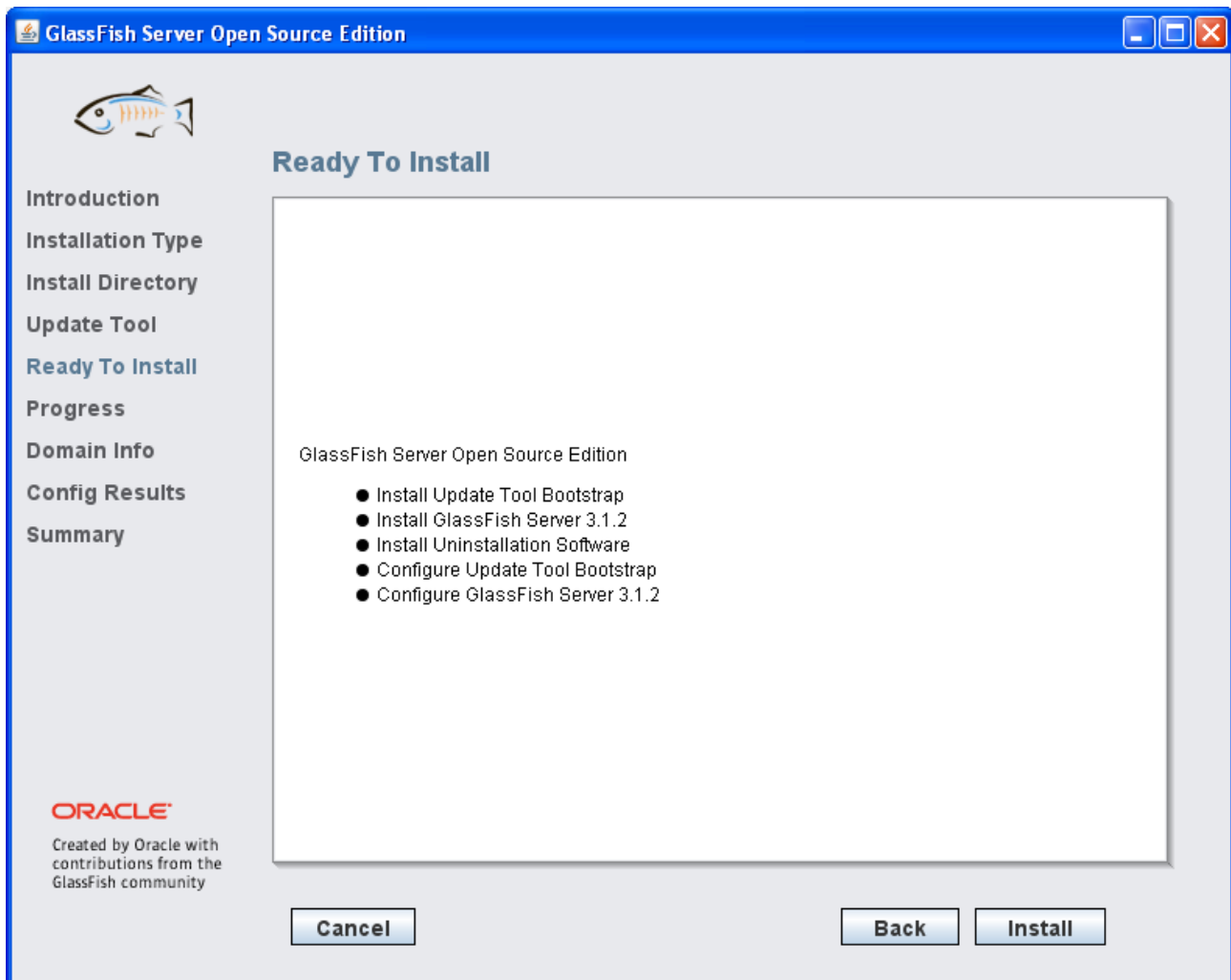
Select installation path (recommended path is the default path) and Click on “Next” button.



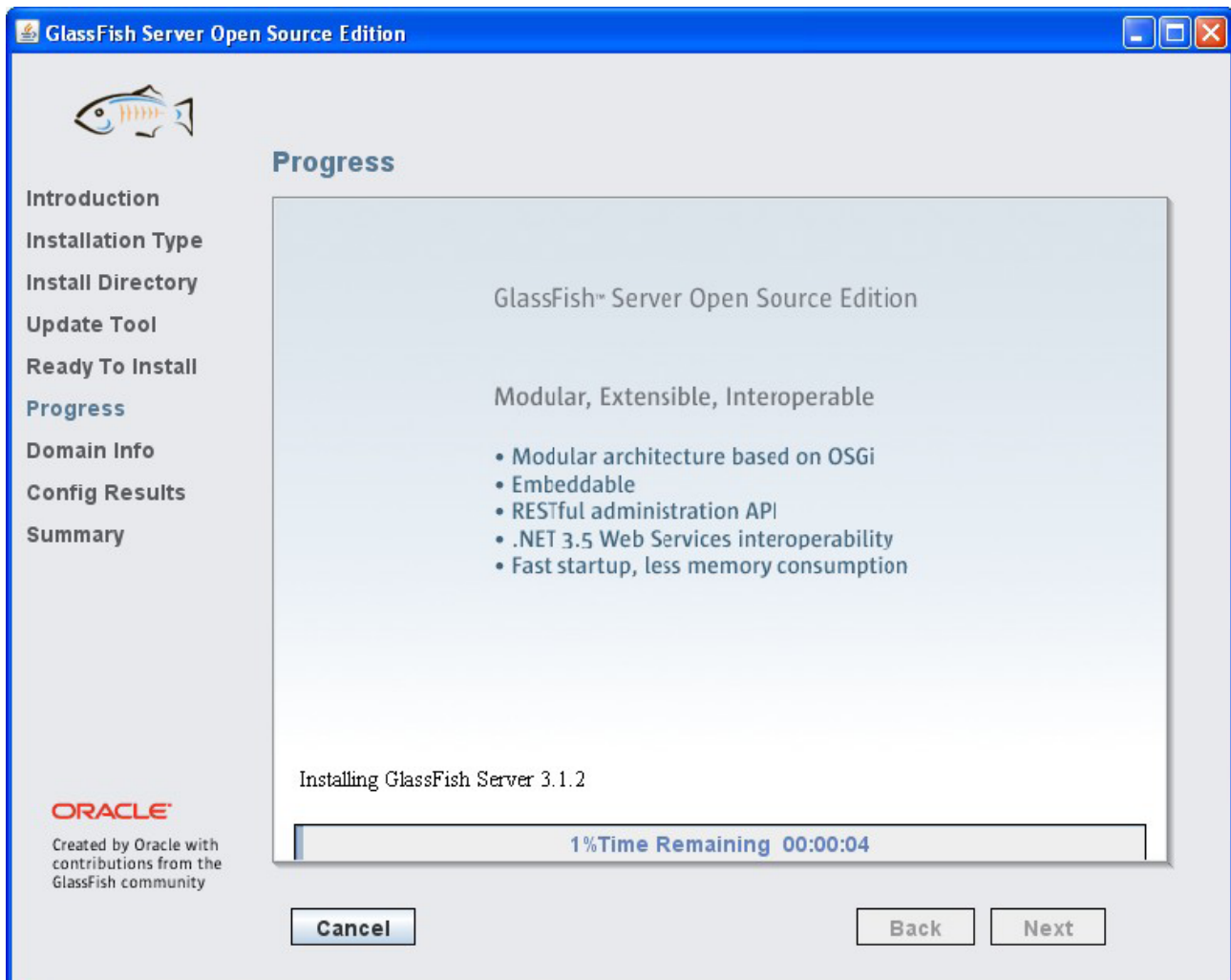
Check “Install Update Tool” and “Enable Updates Tool” check-box and click on “Next” button.

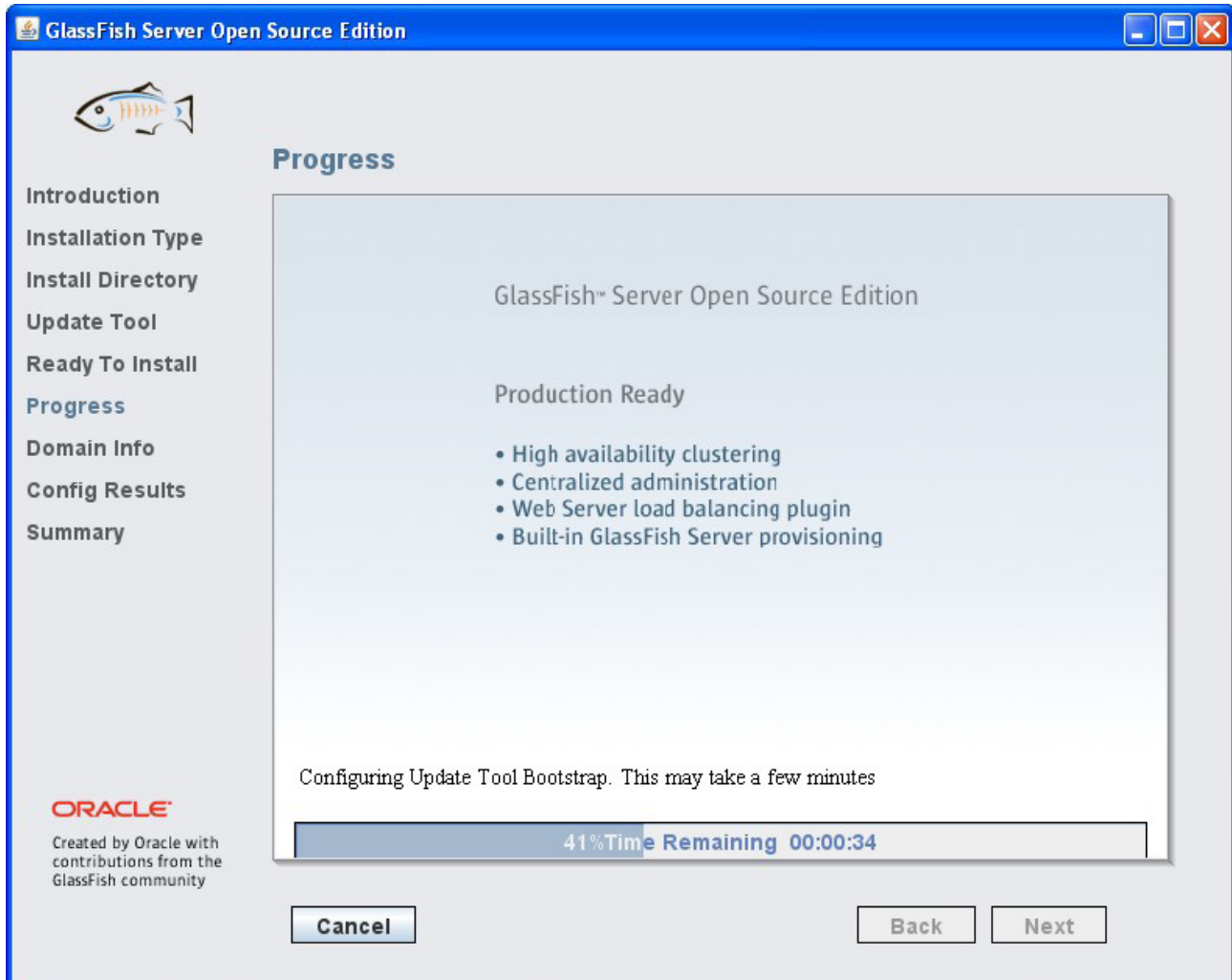


Clicking on "Install" button.



Following dialogs will appear after clicking on “Install” button.





Select "Create Operating System Service for the domain" and "Start domain after creation" checkbox and click on "Next" button.

Please Note: Do not modify the following default settings in Domain Info

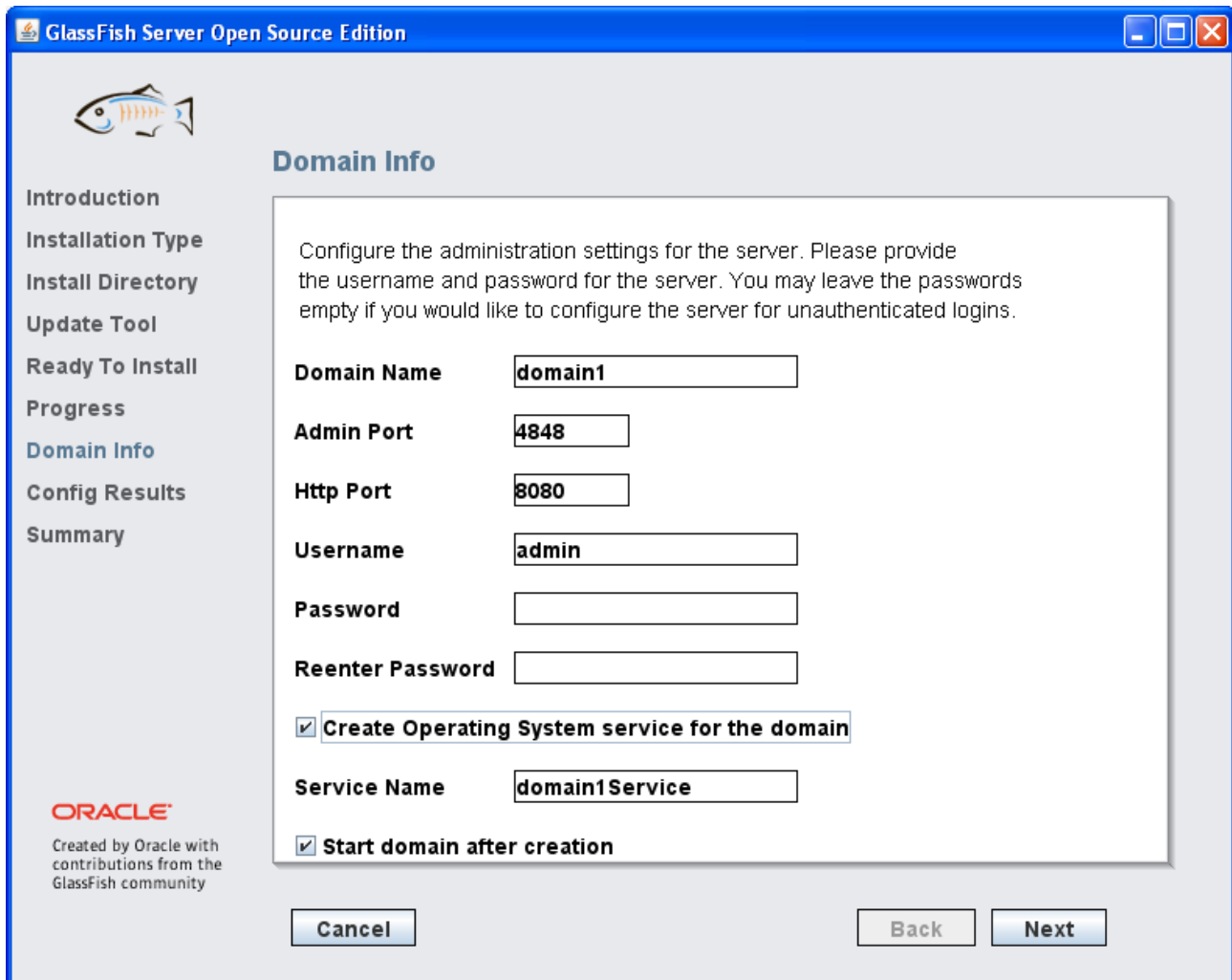
Domain Name: domain1

Admin Port: 4848

Http Port: 8080

Username: admin

Service Name: domain1Service



GlassFish Server Open Source Edition

Domain Info

Configure the administration settings for the server. Please provide the username and password for the server. You may leave the passwords empty if you would like to configure the server for unauthenticated logins.

Domain Name:

Admin Port:

Http Port:

Username:

Password:

Reenter Password:

☒ Create Operating System service for the domain

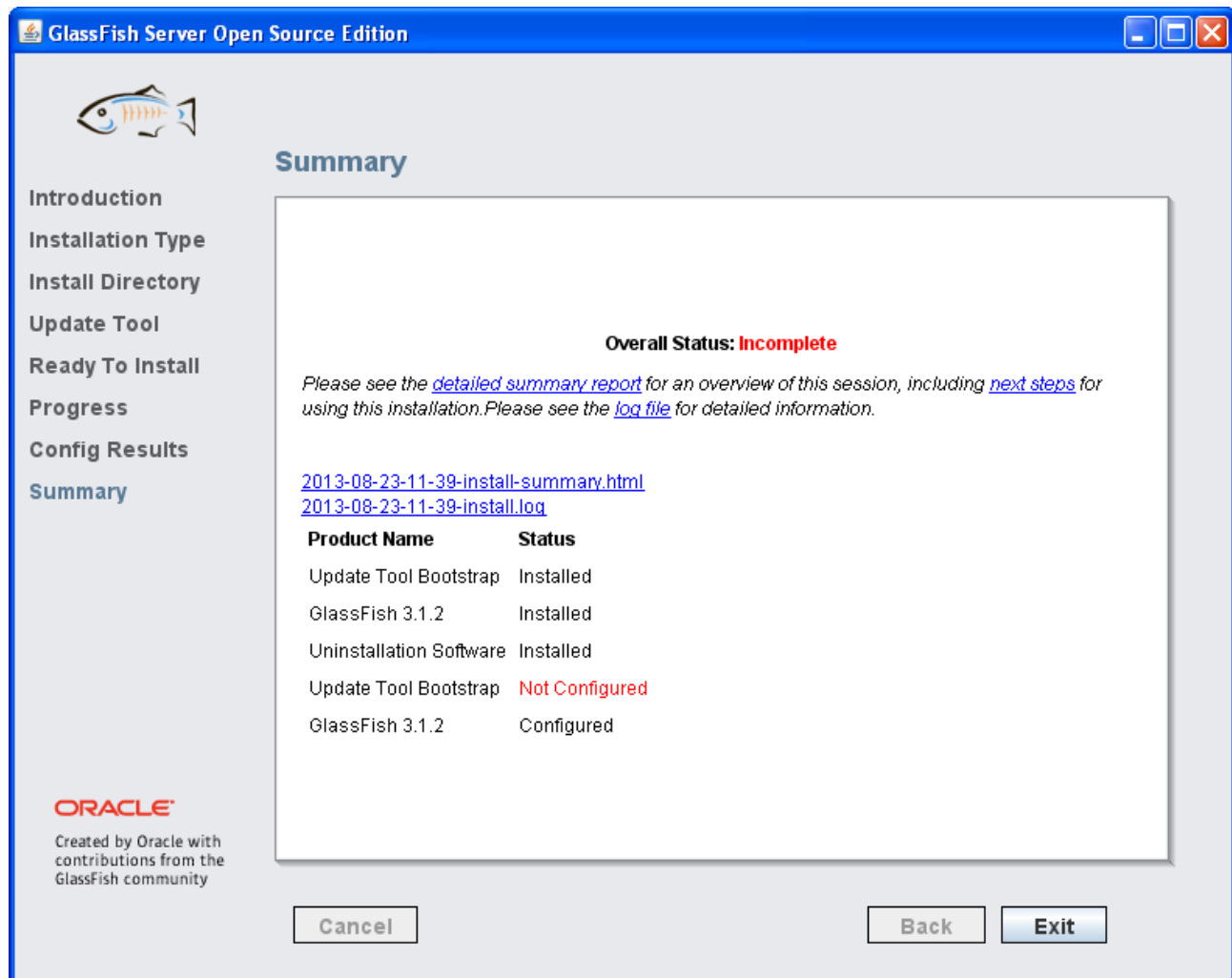
Service Name:

☒ Start domain after creation

ORACLE
Created by Oracle with contributions from the GlassFish community

Please wait till the required configuration is complete. Once the configuration is complete, "Next" button will be enabled

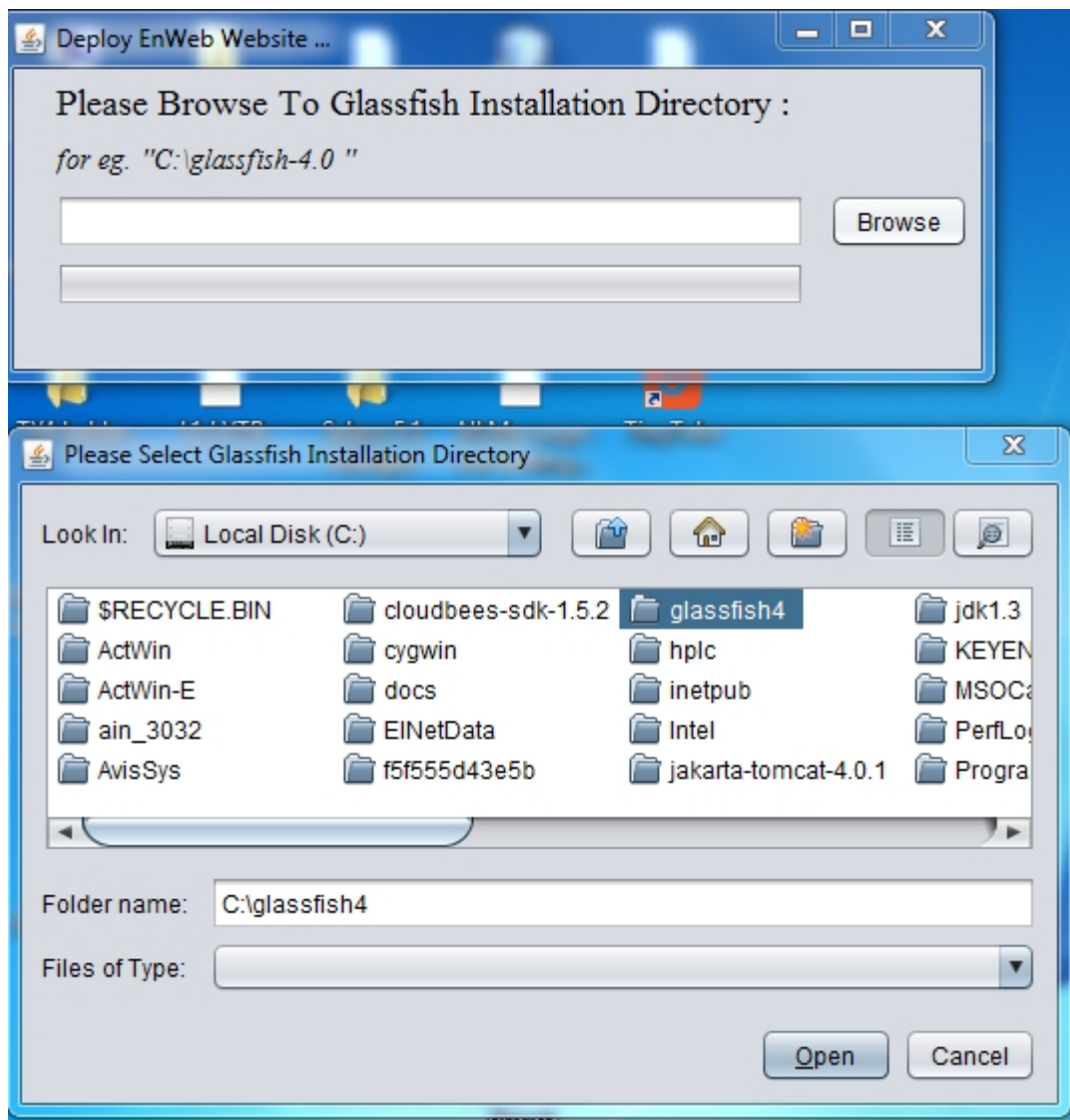
Click on "Exit" button



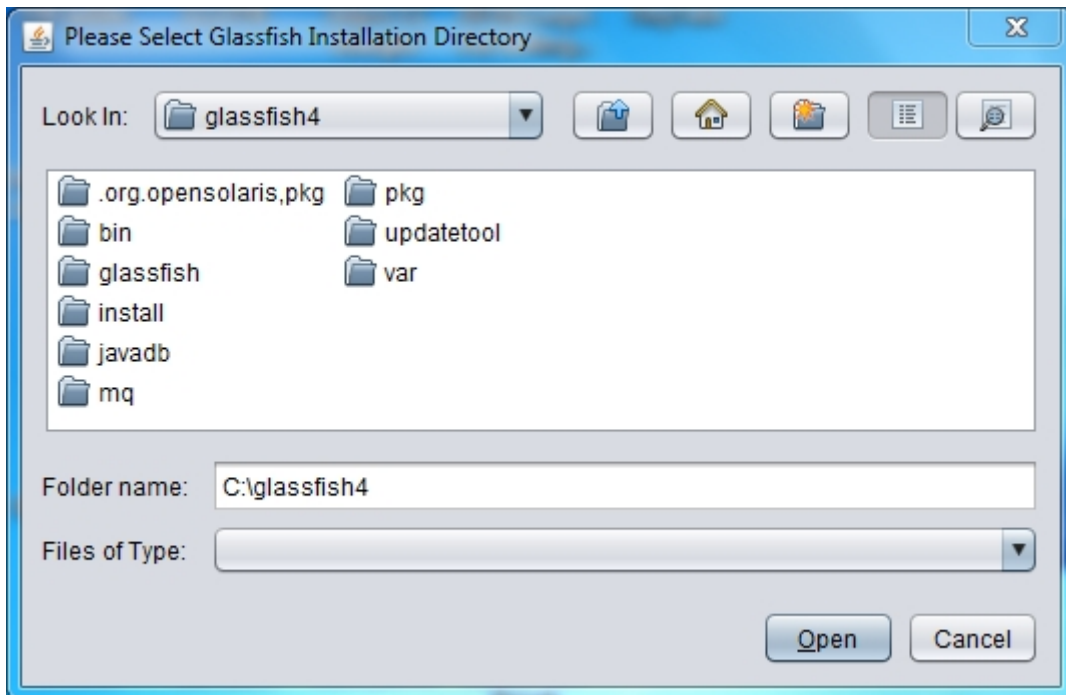
Please Note: In the above dialog status of GlassFish 3.1.2 should be Installed and Configured. If it is not installed or configured then please verify JDK installation and Environment Variable setting Installation of GlassFish Server is complete.

Thats it for now. You can proceed with glassfish configuration utility.

Glassfish Configuration :

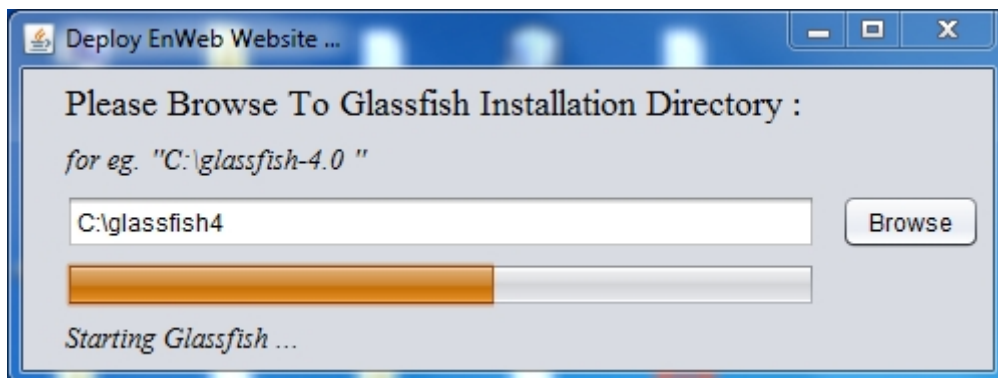


Here also you have to follow similar steps you have taken with previous configuration utility. Click on browse button and choose glassfish folder as shown in fig.:



Once you inside glassfish folder click on open button.

If path is correct then configuration process should start next.

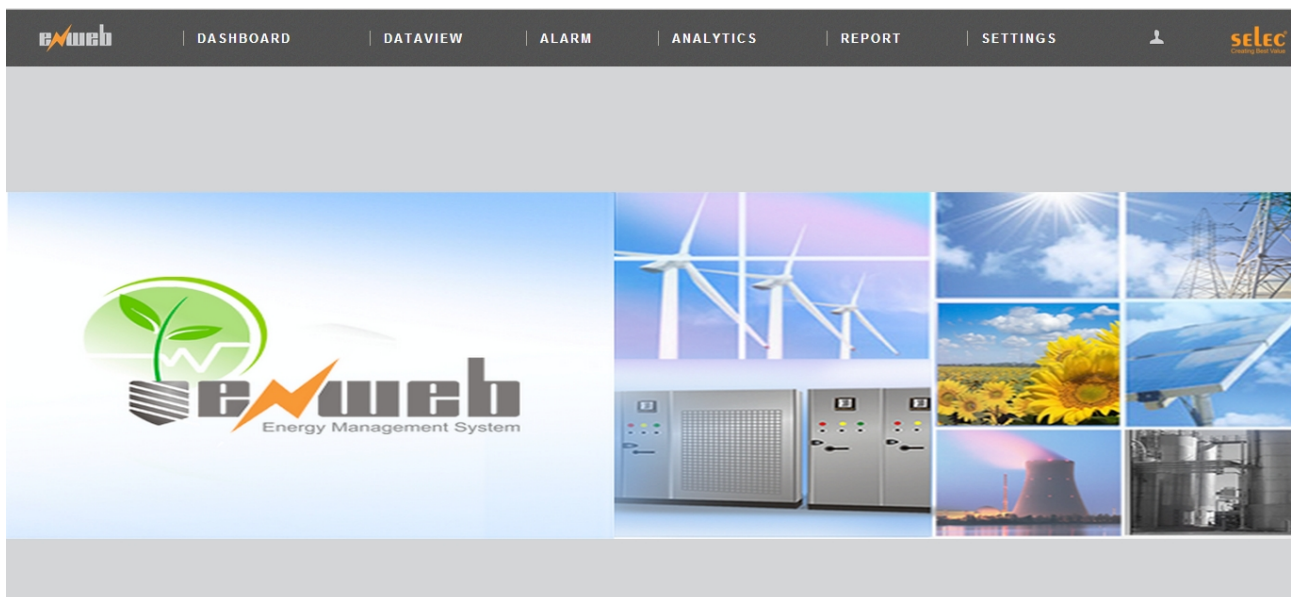


Wait while process completed. Once glassfish configuration is done then message box will be shown to you; then close the message box and close the application. You have successfully installed the server part of EnWeb Application.

To view the application type <http://localhost:8080/EnWeb> address in your browser address bar. You will see page like this.



Type admin as user name and SelecAdmin as password. After successful login you will be shown index page of application.



Installing Win Service

Extract “service” in “C:\” Drive

Click on setup.exe for installation of Windows Service

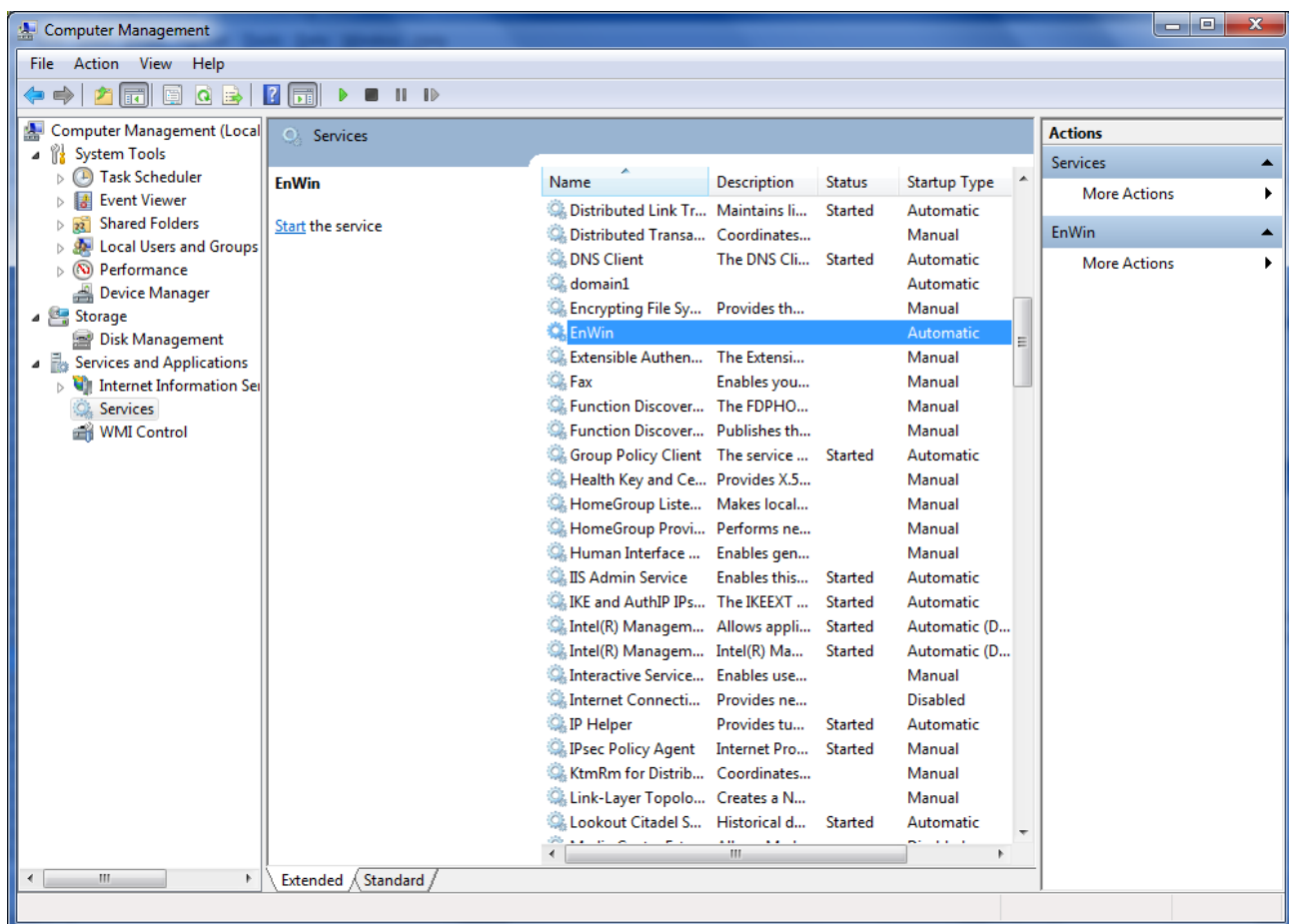
After successful installation of windows service run “Install Win Ser.bat” batch file

Install FTDI cable drivers for USB to RS485 converter

Service Configuration

Click on Start > My Computer (Right Click) > Manage > Services and Applications > Services >

EnWin service. Right Click on “EnWin” service > Properties



Select Recovery tab and set First Failure, Second Failure and Subsequent Failure to “Restart the Service” and click on OK Button

Follow similar steps for Domain1service as that done for EnWin service.

Restart PC

Installation is complete